



# MIGRATORY BIRD HARVESTING REGULATIONS

# UNIT 6

FALL  
WINTER  
2022-23



www.crrcalaska.org

## LICENSE AND STAMP REQUIREMENTS

### HUNTING LICENSE

+18 Yrs Old

STATE



DUCK STAMP

ALL WATERFOWL HUNTERS MUST HAVE A CURRENT FEDERAL MIGRATORY BIRD HUNTING STAMP UNLESS

Eligible to Participate in the Spring & Summer Harvest of waterfowl & eggs

Qualified Permanent Rural Resident

AN ALASKA WATERFOWL CONSERVATION STAMP AND HIP ENROLLMENT IS REQUIRED UNLESS

- 18 Years Old Alaska Resident

+ 60 Years Old Alaska Resident

Disabled Veteran Eligible for a Free License

Qualify for a Low-income License

Harvest Information Program required

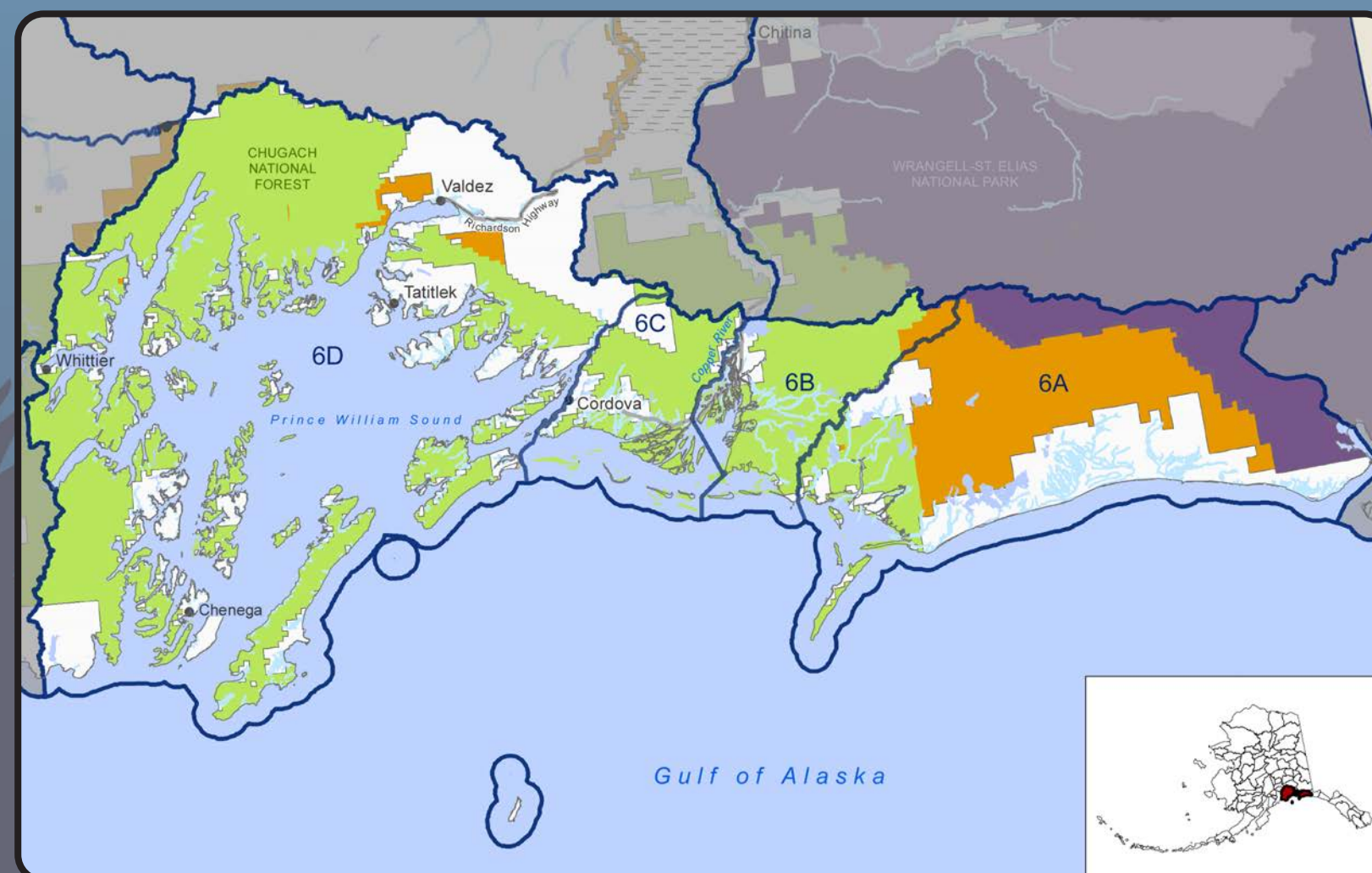
PROOF OF ENROLLMENT



## PROHIBITED HARVEST METHODS AND MEANS



## MAP



These aren't the regulations and shouldn't be used to make harvest decisions but are devised as a guidance and first step to summarizing hunting opportunities in the unit.



# MIGRATORY BIRD HARVESTING REGULATIONS

# UNIT 6

FALL  
WINTER  
2022-23



www.crrcalaska.org

## SPECIES OPEN FOR HUNTING & BAG LIMIT



**American Wigeon**  
8 per day, 24 in possession



**Barrow's Goldeneye**  
8 per day, 24 in possession



**Black Scoter**  
10 per day, 20 in possession



**Blue-winged Teal**  
8 per day, 24 in possession




**Brant**  
2 per day, 6 in possession



**Bufflehead**  
8 per day, 24 in possession



**Canada Goose**  
4 per day, 12 in possession



**Cackling Goose**  
4 per day, 12 in possession



**Canvasback**  
2 per day, 6 in possession



**Common Eider**  
10 per day, 20 in possession



**Common Goldeneye**  
8 per day, 24 in possession



**Common Merganser**  
10 per day, 20 in possession



**Emperor Geese**  
Residents 1 per season, by registration permit only



**Eurasian Wigeon**  
8 per day, 24 in possession



**Gadwall**  
8 per day, 24 in possession



**Greater Scaup**  
8 per day, 24 in possession



**Greater White-fronted Goose**  
4 per day, 12 in possession



**Green-winged Teal**  
8 per day, 24 in possession



**Harlequin Duck**  
6 per day, 12 in possession



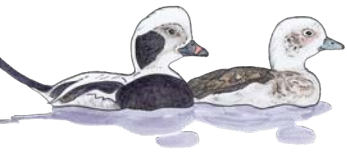
**Hooded Merganser**  
10 per day, 20 in possession



**King Eider**  
10 per day, 20 in possession



**Lesser Scaup**  
8 per day, 24 in possession



**Long-tailed Duck**  
6 per day, 12 in possession



**Mallard**  
8 per day, 24 in possession



**Northern Pintail**  
10 per day, 20 in possession



**Northern Shoveler**  
8 per day, 24 in possession



**Red-breasted Merganser**  
10 per day, 20 in possession



**Redhead**  
8 per day, 24 in possession



**Ring-necked Duck**  
8 per day, 24 in possession



**Ross' Geese**  
6 per day, 18 in possession



**Sandhill Cranes**  
2 per day, 6 in possession




**Snipe**  
8 per day, 24 in possession



**Snow Goose**  
6 per day, 18 in possession



**Surf Scoter**  
10 per day, 20 in possession



**White-wing Scoter**  
10 per day, 20 in possession



# MIGRATORY BIRD HARVESTING REGULATIONS **UNIT 6**

FALL  
WINTER  
2022-23



[www.crrcalaska.org](http://www.crrcalaska.org)

**CANADA GOOSE SEASON IS SEPTEMBER 28TH – DECEMBER 16TH.**  
**UNIT 6D MIDDLETON ISLAND, CANADA GOOSE HUNTING IS BY REGISTRATION PERMIT ONLY.**  
**POSSESSION LIMIT IS 1 GOOSE PER PERMIT: 1 PERMIT PER HUNTER. PERMITS AVAILABLE IN ANCHORAGE OR CORDOVA**

### CORDOVA SHOOTING TIMES

Date	SEPT.		OCT.		NOV.		DEC.	
	Start	End	Start	End	Start	End	Start	End
1	6:08	8:46	7:20	7:13	8:39	5:43	8:54	3:40
2	6:10	8:43	7:23	7:10	8:42	5:40	8:56	3:39
3	6:13	8:40	7:25	7:07	8:44	5:38	8:58	3:38
4	6:15	8:37	7:28	7:04	8:47	5:35	9:00	3:37
5	6:17	8:34	7:30	7:01	8:50	5:33	9:02	3:36
6	6:20	8:31	7:32	6:58	8:52	5:30	9:03	3:35
7	6:22	8:28	7:35	6:55	7:55	4:28	9:05	3:34
8	6:25	8:25	7:37	6:52	7:57	4:25	9:07	3:33
9	6:27	8:22	7:40	6:49	8:00	4:23	9:08	3:33
10	6:30	8:18	7:42	6:46	8:03	4:20	9:10	3:32
11	6:32	8:15	7:45	6:43	8:05	4:18	9:11	3:32
12	6:34	8:12	7:47	6:40	8:08	4:16	9:13	3:31
13	6:37	8:09	7:50	6:37	8:11	4:13	9:14	3:31
14	6:39	8:06	7:52	6:34	8:13	4:11	9:15	3:31
15	6:42	8:03	7:55	6:31	8:16	4:09	9:16	3:31
16	6:44	8:00	7:57	6:28	8:18	4:07	9:17	3:31
17	6:46	7:57	8:00	6:25	8:21	4:04		
18	6:49	7:54	8:03	6:22	8:23	4:02		
19	6:51	7:51	8:05	6:19	8:26	4:00		
20	6:54	7:47	8:08	6:16	8:28	3:58		
21	6:56	7:44	8:10	6:14	8:31	3:56		
22	6:58	7:41	8:13	6:11	8:33	3:55		
23	7:01	7:38	8:15	6:08	8:36	3:53		
24	7:03	7:35	8:18	6:05	8:38	3:51		
25	7:06	7:32	8:21	6:02	8:41	3:49		
26	7:08	7:29	8:23	5:59	8:43	3:48		
27	7:10	7:26	8:26	5:57	8:45	3:46		
28	7:13	7:23	8:28	5:54	8:47	3:45		
29	7:15	7:20	8:31	5:51	8:50	3:43		
30	7:18	7:16	8:34	5:48	8:52	3:42		
31			8:36	5:46				

**SEASON CLOSED**

### TATITLEK SHOOTING TIMES

Date	SEPT.		OCT.		NOV.		DEC.	
	Start	End	Start	End	Start	End	Start	End
1	6:12	8:50	7:24	7:17	8:43	5:47	8:58	3:44
2	6:14	8:47	7:27	7:14	8:46	5:44	9:00	3:43
3	6:17	8:44	7:29	7:11	8:48	5:42	9:02	3:42
4	6:19	8:41	7:32	7:08	8:51	5:39	9:04	3:41
5	6:21	8:38	7:34	7:05	8:54	5:37	9:06	3:40
6	6:24	8:35	7:36	7:02	8:56	5:34	9:07	3:39
7	6:26	8:32	7:39	6:59	7:59	4:32	9:09	3:38
8	6:29	8:29	7:41	6:56	8:01	4:29	9:11	3:37
9	6:31	8:26	7:44	6:53	8:04	4:27	9:12	3:37
10	6:34	8:22	7:46	6:50	8:07	4:24	9:14	3:36
11	6:36	8:19	7:49	6:47	8:09	4:22	9:15	3:36
12	6:38	8:16	7:51	6:44	8:12	4:20	9:17	3:35
13	6:41	8:13	7:54	6:41	8:15	4:17	9:18	3:35
14	6:43	8:10	7:56	6:38	8:17	4:15	9:19	3:35
15	6:46	8:07	7:59	6:35	8:20	4:13	9:20	3:35
16	6:48	8:04	8:01	6:32	8:22	4:11	9:21	3:35
17	6:50	8:01	8:04	6:29	8:25	4:08		
18	6:53	7:58	8:07	6:26	8:27	4:06		
19	6:55	7:55	8:09	6:23	8:30	4:04		
20	6:58	7:51	8:12	6:20	8:32	4:02		
21	7:00	7:48	8:14	6:18	8:35	4:00		
22	7:02	7:45	8:17	6:15	8:37	3:59		
23	7:05	7:42	8:19	6:12	8:40	3:57		
24	7:07	7:39	8:22	6:09	8:42	3:55		
25	7:10	7:36	8:25	6:06	8:45	3:53		
26	7:12	7:33	8:27	6:03	8:47	3:52		
27	7:14	7:30	8:30	6:01	8:49	3:50		
28	7:17	7:27	8:32	5:58	8:51	3:49		
29	7:19	7:24	8:35	5:55	8:54	3:47		
30	7:22	7:20	8:38	5:52	8:56	3:46		
31			8:40	5:50				

**SEASON CLOSED**

### CHENEGA SHOOTING TIMES

Date	SEPT.		OCT.		NOV.		DEC.	
	Start	End	Start	End	Start	End	Start	End
1	6:20	8:58	7:32	7:25	8:51	5:55	9:06	3:52
2	6:22	8:55	7:35	7:22	8:54	5:52	9:08	3:51
3	6:25	8:52	7:37	7:19	8:56	5:50	9:10	3:50
4	6:27	8:49	7:40	7:16	8:59	5:47	9:12	3:49
5	6:29	8:46	7:42	7:13	9:02	5:45	9:14	3:48
6	6:32	8:43	7:44	7:10	9:04	5:42	9:15	3:47
7	6:34	8:40	7:47	7:07	8:07	4:40	9:17	3:46
8	6:37	8:37	7:49	7:04	8:09	4:37	9:19	3:45
9	6:39	8:34	7:52	7:01	8:12	4:35	9:20	3:45
10	6:42	8:30	7:54	6:58	8:15	4:32	9:22	3:44
11	6:44	8:27	7:57	6:55	8:17	4:30	9:23	3:44
12	6:46	8:24	7:59	6:52	8:20	4:28	9:25	3:43
13	6:49	8:21	8:02	6:49	8:23	4:25	9:26	3:43
14	6:51	8:18	8:04	6:46	8:25	4:23	9:27	3:43
15	6:54	8:15	8:07	6:43	8:28	4:21	9:28	3:43
16	6:56	8:12	8:09	6:40	8:30	4:19	9:29	3:43
17	6:58	8:09	8:12	6:37	8:33	4:16		
18	7:01	8:06	8:15	6:34	8:35	4:14		
19	7:03	8:03	8:17	6:31	8:38	4:12		
20	7:06	7:59	8:20	6:28	8:40	4:10		
21	7:08	7:56	8:22	6:26	8:43	4:08		
22	7:10	7:53	8:25	6:23	8:45	4:07		
23	7:13	7:50	8:27	6:20	8:48	4:05		
24	7:15	7:47	8:30	6:17	8:50	4:03		
25	7:18	7:44	8:33	6:14	8:53	4:01		
26	7:20	7:41	8:35	6:11	8:55	4:00		
27	7:22	7:38	8:38	6:09	8:57	3:58		
28	7:25	7:35	8:40	6:06	8:59	3:57		
29	7:27	7:32	8:43	6:03	9:02	3:55		
30	7:30	7:28	8:46	6:00	9:04			
31			8:48	5:58				

**SEASON CLOSED**



# MIGRATORY BIRD HARVESTING REGULATIONS

# UNIT 7

FALL  
WINTER  
2022-23



www.crrcalaska.org

## LICENSE AND STAMP REQUIREMENTS

ALL WATERFOWL HUNTERS MUST HAVE A CURRENT FEDERAL MIGRATORY BIRD HUNTING STAMP UNLESS

Eligible to Participate in the Spring & Summer Harvest of waterfowl & eggs

Qualified Permanent Rural Resident

AN ALASKA WATERFOWL CONSERVATION STAMP AND HIP ENROLLMENT IS REQUIRED UNLESS

- 18 Years Old Alaska Resident

+ 60 Years Old Alaska Resident

Disabled Veteran Eligible for a Free License

Qualify for a Low-income License

HUNTING LICENSE

+18 Yrs Old



DUCK STAMP

Harvest Information Program required

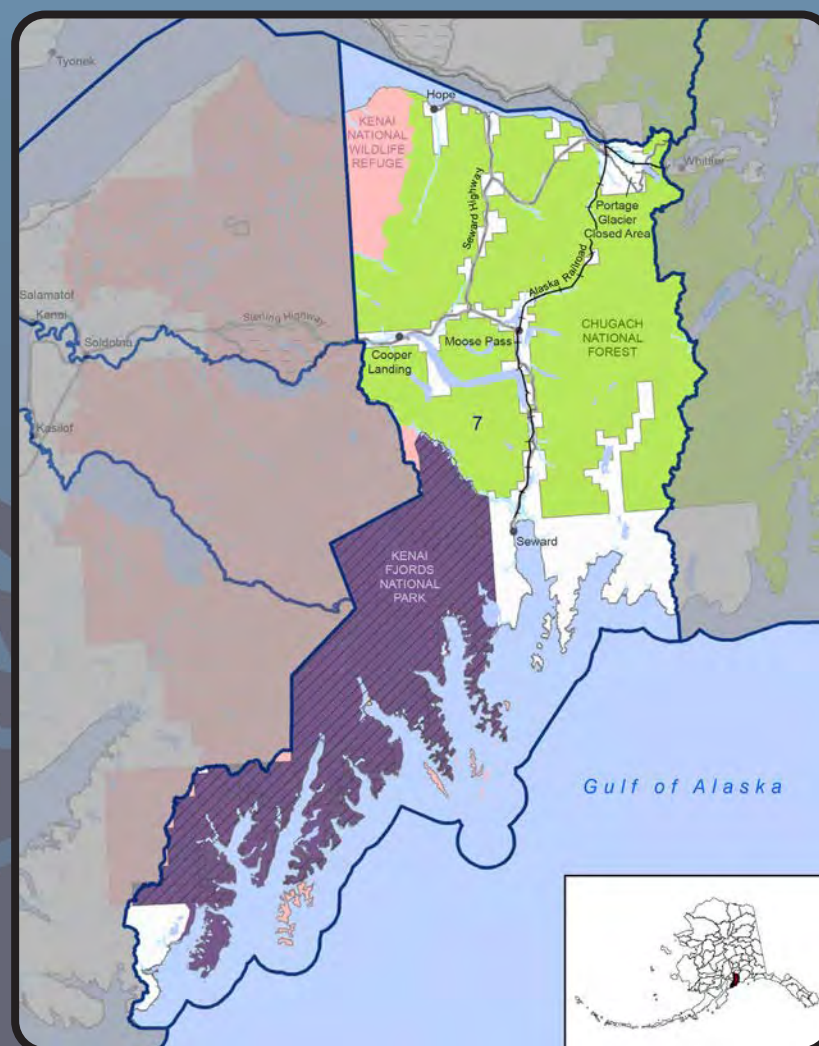
PROOF OF ENROLLMENT



BASIC HUNTER EDUCATION ALL HUNTERS



## MAP



## PROHIBITED HARVEST METHODS AND MEANS



These aren't the regulations and shouldn't be used to make harvest decisions but are devised as a guidance and first step to summarizing hunting opportunities in the unit.



# MIGRATORY BIRD HARVESTING REGULATIONS

# UNIT 7

FALL  
WINTER  
2022-23



www.crrcalaska.org

## SPECIES OPEN FOR HUNTING & BAG LIMIT



**American Wigeon**  
8 per day, 24 in possession



**Barrow's Goldeneye**  
8 per day, 24 in possession



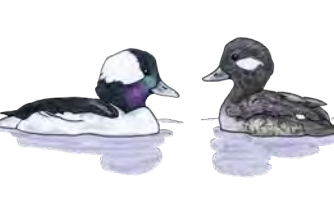
**Black Scoter**  
10 per day, 20 in possession



**Blue-winged Teal**  
8 per day, 24 in possession




**Brant**  
2 per day, 6 in possession



**Bufflehead**  
8 per day, 24 in possession



**Canada Goose**  
4 per day, 12 in possession



**Cackling Goose**  
4 per day, 12 in possession



**Canvasback**  
2 per day, 6 in possession



**Common Eider**  
10 per day, 20 in possession



**Common Goldeneye**  
8 per day, 24 in possession



**Common Merganser**  
10 per day, 20 in possession



**Emperor Geese**  
Residents 1 per season, by registration permit only



**Eurasian Wigeon**  
8 per day, 24 in possession



**Gadwall**  
8 per day, 24 in possession



**Greater Scaup**  
8 per day, 24 in possession



**Greater White-fronted Goose**  
4 per day, 12 in possession



**Green-winged Teal**  
8 per day, 24 in possession



**Harlequin Duck**  
6 per day, 12 in possession




**Hooded Merganser**  
10 per day, 20 in possession



**King Eider**  
10 per day, 20 in possession



**Lesser Scaup**  
8 per day, 24 in possession



**Long-tailed Duck**  
6 per day, 12 in possession



**Mallard**  
8 per day, 24 in possession



**Northern Pintail**  
10 per day, 20 in possession



**Northern Shoveler**  
8 per day, 24 in possession



**Red-breasted Merganser**  
10 per day, 20 in possession



**Redhead**  
8 per day, 24 in possession



**Ring-necked Duck**  
8 per day, 24 in possession



**Ross' Geese**  
6 per day, 18 in possession



**Sandhill Cranes**  
2 per day, 6 in possession



**Snipe**  
8 per day, 24 in possession



**Snow Goose**  
6 per day, 18 in possession



**Surf Scoter**  
10 per day, 20 in possession



**White-wing Scoter**  
10 per day, 20 in possession



# MIGRATORY BIRD HARVESTING REGULATIONS

# UNIT 7

FALL  
WINTER  
2022-23



www.crrcalaska.org

**GMU 7: PORTAGE GLACIER CLOSED AREA IS CLOSED TO THE DISCHARGE OF FIREARMS WITHIN 150 YARDS OF ALL DEVELOPED FACILITIES ON FOREST SERVICE LANDS SOUTH OF PORTAGE CREEK.**

## SEWARD SHOOTING TIMES

Date	SEPTEMBER		OCTOBER		NOVEMBER		DECEMBER	
	Start	End	Start	End	Start	End	Start	End
1	6:23	9:05	7:37	7:29	8:59	5:56	9:16	3:51
2	6:25	9:01	7:40	7:26	9:02	5:54	9:19	3:49
3	6:28	8:58	7:42	7:23	9:04	5:51	9:21	3:48
4	6:30	8:55	7:45	7:20	9:07	5:48	9:23	3:47
5	6:33	8:52	7:47	7:17	9:10	5:46	9:25	3:46
6	6:35	8:49	7:50	7:14	9:12	5:43	9:26	3:45
7	6:38	8:46	7:53	7:11	8:15	4:40	9:28	3:44
8	6:40	8:42	7:55	7:07	8:18	4:38	9:30	3:43
9	6:43	8:39	7:58	7:04	8:21	4:35	9:32	3:43
10	6:45	8:36	8:00	7:01	8:23	4:33	9:33	3:42
11	6:48	8:33	8:03	6:58	8:26	4:30	9:35	3:41
12	6:50	8:30	8:05	6:55	8:29	4:28	9:36	3:41
13	6:53	8:27	8:08	6:52	8:32	4:25	9:37	3:41
14	6:55	8:23	8:11	6:49	8:34	4:23	9:39	3:40
15	6:57	8:20	8:13	6:46	8:37	4:21	9:40	3:40
16	7:00	8:17	8:16	6:43	8:40	4:19	9:41	3:40
17	7:02	8:14	8:18	6:40	8:42	4:16		
18	7:05	8:11	8:21	6:37	8:45	4:14		
19	7:07	8:07	8:24	6:34	8:48	4:12		
20	7:10	8:04	8:26	6:31	8:50	4:10		
21	7:12	8:01	8:29	6:28	8:53	4:08		
22	7:15	7:58	8:32	6:25	8:55	4:06		
23	7:17	7:55	8:34	6:22	8:58	4:04		
24	7:20	7:52	8:37	6:19	9:00	4:02		
25	7:22	7:48	8:40	6:16	9:03	4:00		
26	7:25	7:45	8:42	6:13	9:05	3:59		
27	7:27	7:42	8:45	6:10	9:07	3:57		
28	7:30	7:39	8:48	6:08	9:10	3:55		
29	7:32	7:36	8:51	6:05	9:12	3:54		
30	7:35	7:33	8:53	6:02	9:14	3:52		
31			8:56	5:59				

**SEASON  
CLOSED**



# MIGRATORY BIRD HARVESTING REGULATIONS UNIT 15

FALL  
WINTER  
2022-23



www.crrcalaska.org

## LICENSE AND STAMP REQUIREMENTS

ALL WATERFOWL HUNTERS MUST HAVE A CURRENT FEDERAL MIGRATORY BIRD HUNTING STAMP UNLESS

Eligible to Participate in the Spring & Summer Harvest of waterfowl & eggs

Qualified Permanent Rural Resident

AN ALASKA WATERFOWL CONSERVATION STAMP AND HIP ENROLLMENT IS REQUIRED UNLESS

- 18 Years Old Alaska Resident

+ 60 Years Old Alaska Resident

Disabled Veteran Eligible for a Free License

Qualify for a Low-income License

HUNTING LICENSE

+18 Yrs Old



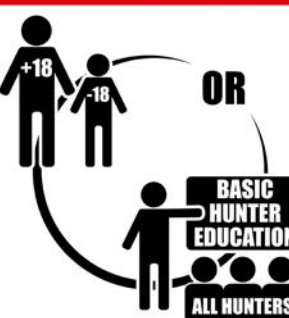
DUCK STAMP

Harvest Information Program required

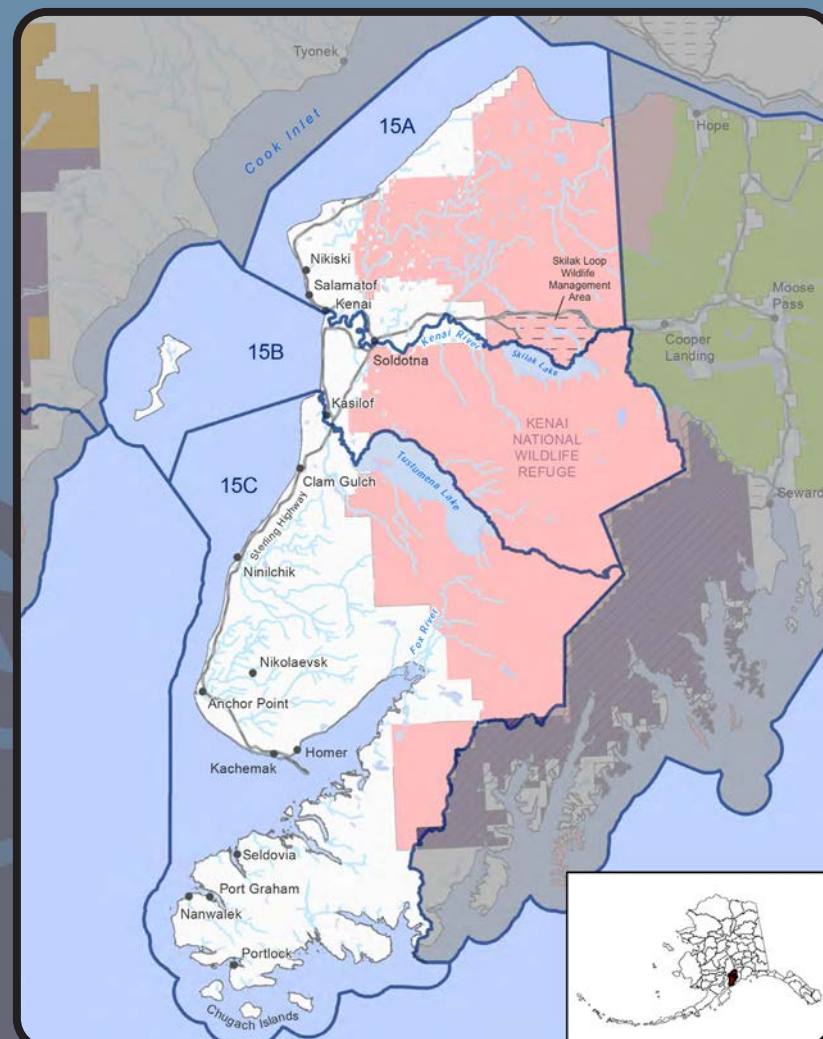
PROOF OF ENROLLMENT



BASIC HUNTER EDUCATION ALL HUNTERS



## MAP



## PROHIBITED HARVEST METHODS AND MEANS



These aren't the regulations and shouldn't be used to make harvest decisions but are devised as a guidance and first step to summarizing hunting opportunities in the unit.



# MIGRATORY BIRD HARVESTING REGULATIONS UNIT 15

FALL  
WINTER  
2022-23



www.crrcalaska.org

## SPECIES OPEN FOR HUNTING & BAG LIMIT



**American Wigeon**  
8 per day, 24 in possession



**Barrow's Goldeneye**  
8 per day, 24 in possession



**Black Scoter**  
10 per day, 20 in possession



**Blue-winged Teal**  
8 per day, 24 in possession




**Brant**  
2 per day, 6 in possession



**Bufflehead**  
8 per day, 24 in possession



**Canada Goose**  
4 per day, 12 in possession



**Cackling Goose**  
4 per day, 12 in possession



**Canvasback**  
2 per day, 6 in possession



**Common Eider**  
10 per day, 20 in possession



**Common Goldeneye**  
8 per day, 24 in possession




**Common Merganser**  
10 per day, 20 in possession



**Emperor Geese**  
Residents 1 per season, by registration permit only



**Eurasian Wigeon**  
8 per day, 24 in possession



**Gadwall**  
8 per day, 24 in possession



**Greater Scaup**  
8 per day, 24 in possession



**Greater White-fronted Goose**  
4 per day, 12 in possession



**Green-winged Teal**  
8 per day, 24 in possession



**Harlequin Duck**  
6 per day, 12 in possession




**Hooded Merganser**  
10 per day, 20 in possession




**King Eider**  
10 per day, 20 in possession



**Lesser Scaup**  
8 per day, 24 in possession




**Long-tailed Duck**  
6 per day, 12 in possession



**Mallard**  
8 per day, 24 in possession



**Northern Pintail**  
10 per day, 20 in possession



**Northern Shoveler**  
8 per day, 24 in possession



**Red-breasted Merganser**  
10 per day, 20 in possession



**Redhead**  
8 per day, 24 in possession



**Ring-necked Duck**  
8 per day, 24 in possession



**Ross' Geese**  
6 per day, 18 in possession



**Sandhill Cranes**  
2 per day, 6 in possession



**Snipe**  
8 per day, 24 in possession



**Snow Goose**  
6 per day, 18 in possession



**Surf Scoter**  
10 per day, 20 in possession



**White-wing Scoter**  
10 per day, 20 in possession





# MIGRATORY BIRD HARVESTING REGULATIONS UNIT 15

FALL  
WINTER  
2022-23



www.crrcalaska.org

**UNIT 15C - THAT PORTION OF KACHEMAK BAY EAST OF A LINE FROM POINT POGIBSHI TO ANCHOR POINT, MAY INCLUDE NO MORE THAN: 2 PER DAY, 4 IN POSSESSION OF HARLEQUIN OR LONG-TAILED DUCKS, AND NO MORE THAN 1 PER DAY, 2 IN POSSESSION OF EIDERS (KING OR COMMON). MOOSE RIVER CLOSED AREA, ON AND WITHIN ¼ MILE OF THE MOOSE RIVER BETWEEN THE KENAI NATIONAL WILDLIFE REFUGE BOUNDARY AND STERLING HIGHWAY, IS CLOSED TO WATERFOWL HUNTING. SKILAK LOOP MANAGEMENT AREA IS OPEN TO SMALL GAME HUNTING BY BOW AND ARROW DURING OCTOBER 1 - MARCH 1.**

**PORT GRAHAM & NANWALEK SHOOTING TIMES**

Date	SEPTEMBER		OCTOBER		NOVEMBER		DECEMBER	
	Start	End	Start	End	Start	End	Start	End
1	6:31	9:13	7:45	7:37	9:07	6:04	9:24	3:59
2	6:33	9:09	7:48	7:34	9:10	6:02	9:27	3:57
3	6:36	9:06	7:50	7:31	9:12	5:59	9:29	3:56
4	6:38	9:03	7:53	7:28	9:15	5:56	9:31	3:55
5	6:41	9:00	7:55	7:25	9:18	5:54	9:33	3:54
6	6:43	8:57	7:58	7:22	9:20	5:51	9:34	3:53
7	6:46	8:54	8:01	7:19	8:23	4:48	9:36	3:52
8	6:48	8:50	8:03	7:15	8:26	4:46	9:38	3:51
9	6:51	8:47	8:06	7:12	8:29	4:43	9:40	3:51
10	6:53	8:44	8:08	7:09	8:31	4:41	9:41	3:50
11	6:56	8:41	8:11	7:06	8:34	4:38	9:43	3:49
12	6:58	8:38	8:13	7:03	8:37	4:36	9:44	3:49
13	7:01	8:35	8:16	7:00	8:40	4:33	9:45	3:49
14	7:03	8:31	8:19	6:57	8:42	4:31	9:47	3:48
15	7:05	8:28	8:21	6:54	8:45	4:29	9:48	3:48
16	7:08	8:25	8:24	6:51	8:48	4:27	9:49	3:48
17	7:10	8:22	8:26	6:48	8:50	4:24		
18	7:13	8:19	8:29	6:45	8:53	4:22		
19	7:15	8:15	8:32	6:42	8:56	4:20		
20	7:18	8:12	8:34	6:39	8:58	4:18		
21	7:20	8:09	8:37	6:36	9:01	4:16		
22	7:23	8:06	8:40	6:33	9:03	4:14		
23	7:25	8:03	8:42	6:30	9:06	4:12		
24	7:28	8:00	8:45	6:27	9:08	4:10		
25	7:30	7:56	8:48	6:24	9:11	4:08		
26	7:33	7:53	8:50	6:21	9:13	4:07		
27	7:35	7:50	8:53	6:18	9:15	4:05		
28	7:38	7:47	8:56	6:16	9:18	4:03		
29	7:40	7:44	8:59	6:13	9:20	4:02		
30	7:43	7:41	9:01	6:10	9:22	4:00		
31			9:04	6:07				

SEASON  
CLOSED



# MIGRATORY BIRD HARVESTING REGULATIONS

## PRINCE WILLIAM SOUND - EAST

SPRING  
SUMMER  
2022



www.crrcalaska.org

### USE AND POSSESSION

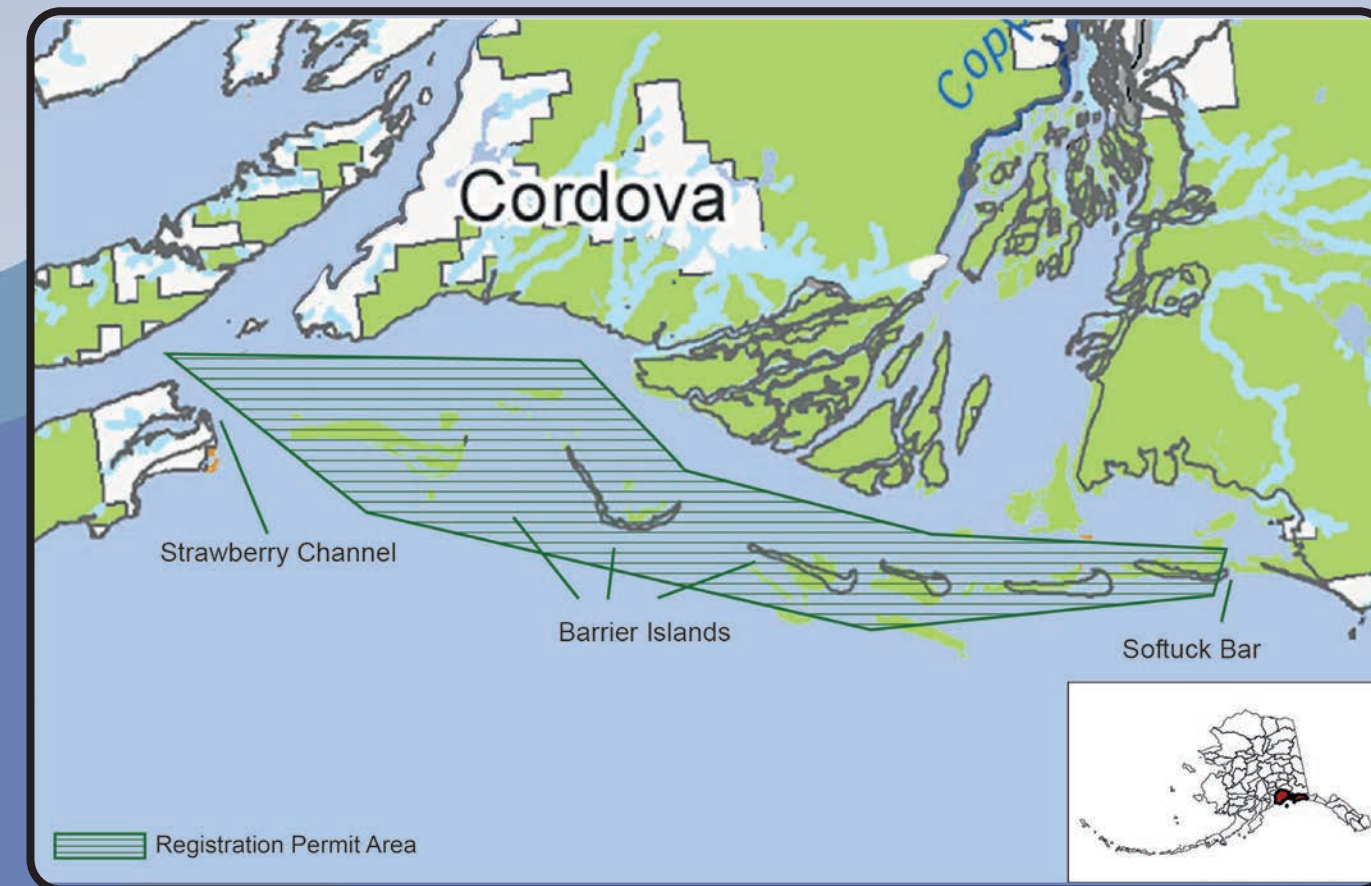
#### Eligible Persons



#### Non Eligible Persons

**YOU MAY RECEIVE PORTIONS OF BIRDS OR THEIR EGGS NOT KEPT FOR HUMAN CONSUMPTION ONLY IF YOU HAVE A VALID U.S. FISH & WILDLIFE SERVICE PERMIT FOR SCIENTIFIC RESEARCH OR EDUCATION.**

### MAP



### PRINCE WILLIAM SOUND EAST

OPEN TO	PRINCE WILLIAM SOUND EAST AREA	STAMPS & LICENSES	OPEN SEASON
Cordova, Tatitlek and Chenega	Barrier Islands between Strawberry Channel and Softtuck Bar within GMU 6 (B and C)	 ANNUAL PERMIT   STATE HUNTING LICENSE	 April 2 to April 30
			 May 1 to May 31 (Gull Egg)

Federal Duck Stamps are not required to participate in this harvest

### PROHIBITED HARVEST METHODS AND MEANS



A STATE HUNTING LICENSE AND STATE DUCK STAMPS ARE REQUIRED UNLESS

- 18  
Years Old  
Alaska  
Resident

+ 60  
Years Old  
Alaska  
Resident

Disabled  
Veteran  
Eligible  
for a Free  
License

Qualify  
for a  
Low-income  
License

These aren't the regulations and shouldn't be used to make harvest decisions but are devised as a guidance and first step to summarizing hunting opportunities in the unit.



# MIGRATORY BIRD HARVESTING REGULATIONS

# PRINCE WILLIAM SOUND - EAST

SPRING  
SUMMER  
2022



www.crrcalaska.org


## SPECIES OPEN FOR HUNTING No Harvest Limit



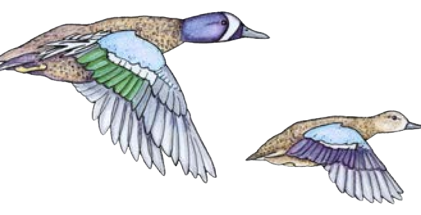
**American Wigeon**



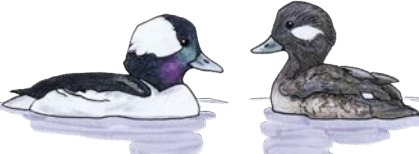
**Barrow's Goldeneye**



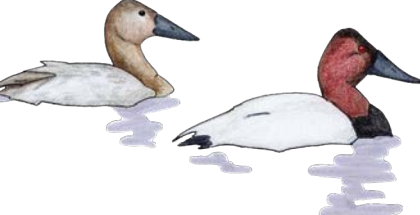
**Black Scoter**




**Blue-winged Teal**



**Bufflehead**



**Canvasback**



**Common Eider**




**Common Goldeneye**



**Common Merganser**



**Eurasian Wigeon**



**Gadwall**



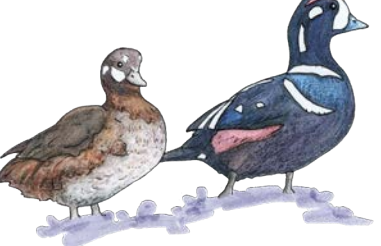
**Greater Scaup**



**Greater White-fronted Goose**



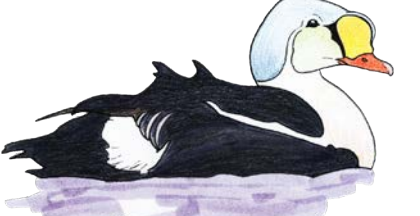
**Green-winged Teal**



**Harlequin duck**




**Hooded Merganser**



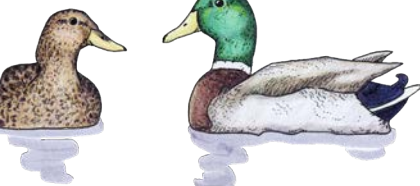
**King Eider**



**Lesser Scaup**




**Long-tailed Duck**



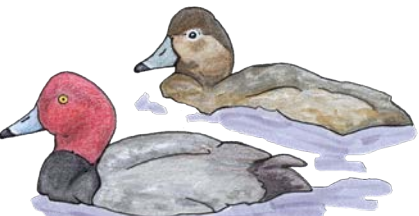
**Mallard**




**Northern Pintail**




**Northern Shoveler**



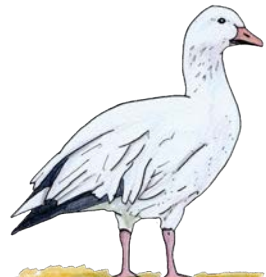
**Redhead**



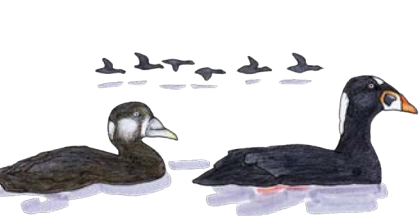
**Ring-necked Duck**



**Red-breasted Merganser**



**Snow Goose**




**Surf Scoter**



**White-wing Scoter**


## SPECIES OPEN FOR EGG GATHERING No Harvest Limit



**Sandhill Cranes**



**Glaucous-winged Gull**



**Herring Gull**



**Mew Gulls**



# MIGRATORY BIRD HARVESTING REGULATIONS

## KACHEMAK BAY AREA

SPRING  
SUMMER  
2022



www.crrcalaska.org

### KACHEMAK BAY AREA

OPEN TO	KACHEMAK BAY AREA	STAMPS & LICENSES	OPEN SEASON
Nanwalek and Port Graham Residents	GMU 15C	 	 April 2 to May 31  July 1 to Aug 31

Federal Duck Stamps are not required to participate in this harvest

A STATE HUNTING LICENSE AND STATE DUCK STAMPS ARE REQUIRED UNLESS

- 18 Years Old Alaska Resident
- + 60 Years Old Alaska Resident
- Disabled Veteran Eligible for a Free License
- Qualify for a Low-income License

### USE AND POSSESSION

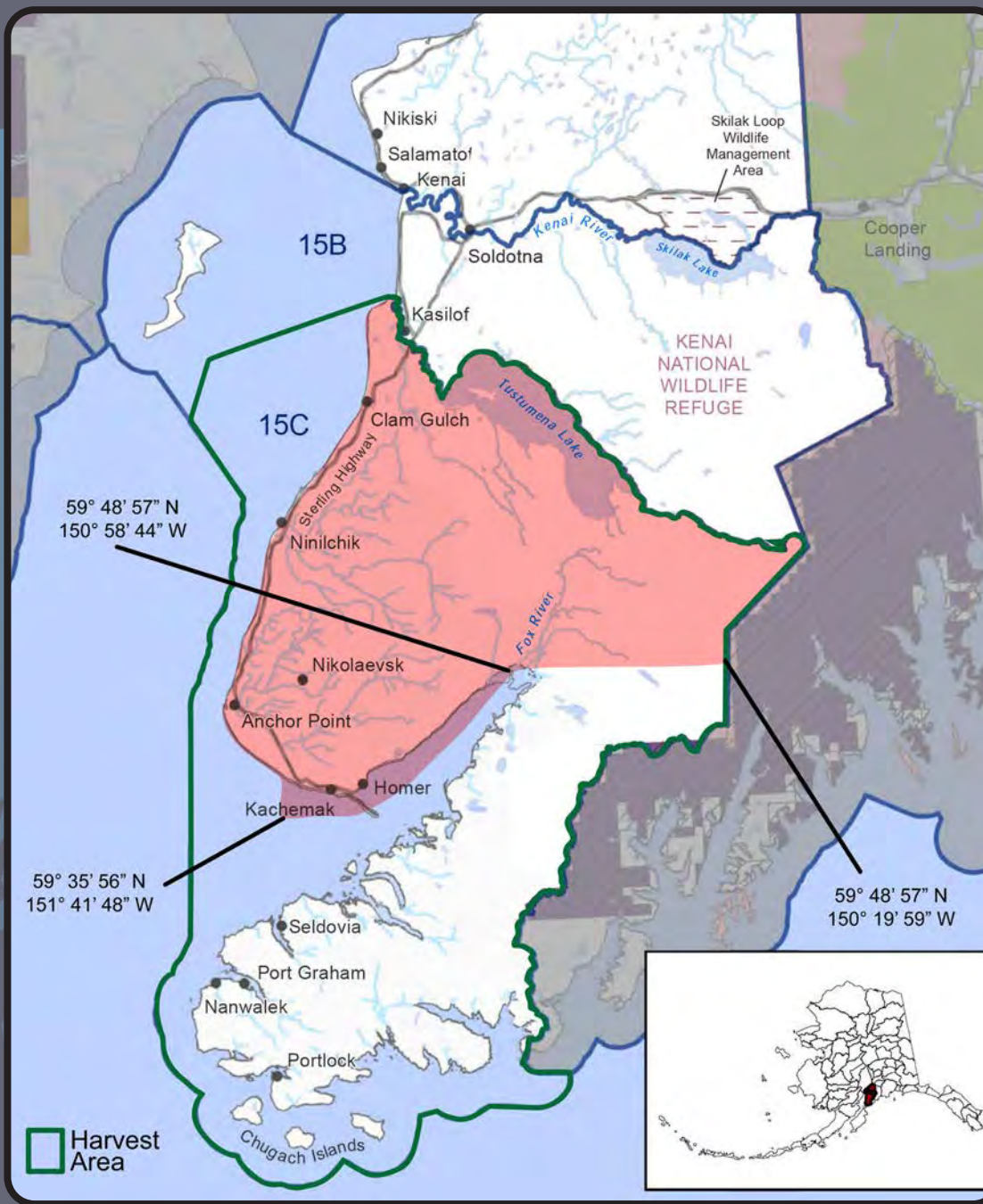
#### Eligible Persons



#### Non Eligible Persons

**YOU MAY RECEIVE PORTIONS OF BIRDS OR THEIR EGGS NOT KEPT FOR HUMAN CONSUMPTION ONLY IF YOU HAVE A VALID U.S. FISH & WILDLIFE SERVICE PERMIT FOR SCIENTIFIC RESEARCH OR EDUCATION.**

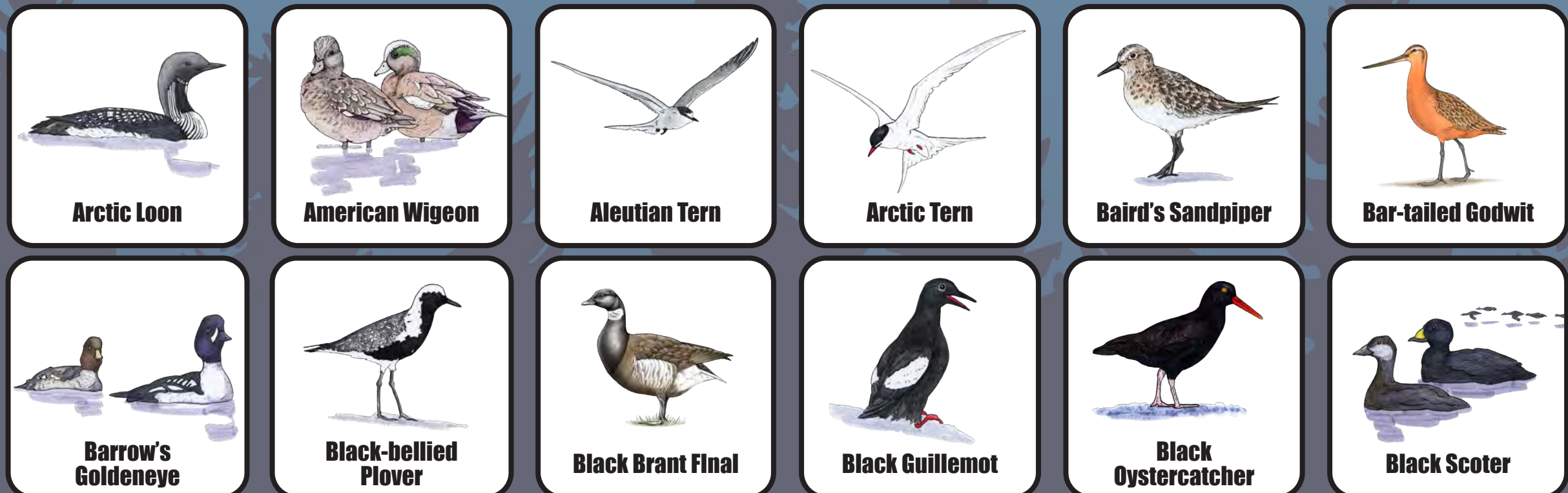
### MAP



### PROHIBITED HARVEST METHODS AND MEANS



### SPECIES OPEN FOR HUNTING & EGG GATHERING



**These aren't the regulations and shouldn't be used to make harvest decisions but are devised as a guidance and first step to summarizing hunting opportunities in the unit.**



# MIGRATORY BIRD HARVESTING REGULATIONS **KACHEMAK BAY AREA**

SPRING  
SUMMER  
2022



www.crrcalaska.org

## SPECIES OPEN FOR HUNTING & EGG GATHERING

**Black-legged Kittiwake**

**Blue-winged Teal**

**Bonaparte's Gull**

**Bufflehead**

**Cackling Goose**

**Canada Goose**

**Canvasback**

**Cassin's Auklet**

**Common Eider**

**Common Goldeneye**

**Common Loon**

**Common Merganser**

**Common Murre**

**Common Ringed Plover**

**Common Snipe**

**Crested Auklet**

**Double-crested Cormorant**

**Dunlin**

**Emperor Goose**

**Eurasian Wigeon**

**Gadwall**

**Glaucous Gull**

**Glaucous-Winged Gull**

**Great Horned Owl**

**Greater Scaup**

**Greater White-fronted Goose**

**Greater Yellowlegs**

**Green-winged Teal**

**Harlequin Duck**

**Herring Gull**

**Hooded Merganser**

**Horned Grebe**

**Horned Puffin**

**Ivory Gull**

**King Eider**

**Least Auklet**

**Least Sandpiper**

**Lesser Scaup**

**Lesser Yellowlegs**

**Long-billed Dowitcher**

**Long-tailed Duck**

**Long-tailed Jaeger**

**Mallard**

**Mew Gulls**

**Northern Fulmar**

**Northern Pintail**

**Northern Shoveler**

**Pacific Loon**

**Parakeet Auklet**

**Parasitic Jaeger**

**Pelagic Cormorant**

**Pigeon Guillemot**

**Pomarine Jaeger**

**Red Phalarope**



# MIGRATORY BIRD HARVESTING REGULATIONS KACHEMAK BAY AREA

SPRING  
SUMMER  
2022



www.crrcalaska.org

## SPECIES OPEN FOR HUNTING & EGG GATHERING



Red-breasted Merganser



Red-legged Kittiwake



Red-necked Grebe



Red-necked Phalarope



Red-throated Loon



Redhead



Rhinoceros Auklet



Ring-Necked Duck



Ruddy Turnstone



Sabine's Gull



Sandhill Crane



Semipalmated Sandpiper



Sharp-tailed Sandpiper



Slaty-backed Gull



Snow Goose



Snowy Owl



Spotted Sandpiper



Surf Scoter



Thick-billed Murre



Tundra Swan



Western Sandpiper



Whiskered Auklet



White-wing Scoter



Wilson's Snipe

**\* THERE ARE NOT HARVEST LIMIT**  
**\* THERE ARE NOT RESTRICTIONS ON EGG GATHERING**



# MIGRATORY BIRD HARVESTING REGULATIONS PRINCE WILLIAM SOUND - WEST

## SPRING SUMMER 2022



www.crrcalaska.org

### USE AND POSSESSION

#### Eligible Persons



#### Non Eligible Persons

**YOU MAY RECEIVE PORTIONS OF BIRDS OR THEIR EGGS NOT KEPT FOR HUMAN CONSUMPTION FROM ELIGIBLE PERSONS ONLY IF YOU HAVE A VALID U.S. FISH & WILDLIFE SERVICE PERMIT FOR SCIENTIFIC RESEARCH OR EDUCATION.**

### PRINCE WILLIAM SOUND WEST

OPEN TO	PRINCE WILLIAM SOUND WEST AREA	STAMPS & LICENSES	OPEN SEASON
Tatitlek and Chenega Residents	GMU 6D	STATE HUNTING LICENSE STATE DUCK STAMP	April 2 to May 31 July 1 to Aug 31

Federal Duck Stamps are not required to participate in this harvest

### MAP



### PROHIBITED HARVEST METHODS AND MEANS



A STATE HUNTING LICENSE AND STATE DUCK STAMPS ARE REQUIRED UNLESS

- 18 Years Old Alaska Resident

+ 60 Years Old Alaska Resident

Disabled Veteran Eligible for a Free License

Qualify for a Low-income License

These aren't the regulations and shouldn't be used to make harvest decisions but are devised as a guidance and first step to summarizing hunting opportunities in the unit.



# MIGRATORY BIRD HARVESTING REGULATIONS PRINCE WILLIAM SOUND - WEST

SPRING  
SUMMER  
2022



www.crrcalaska.org

## SPECIES OPEN FOR HUNTING & EGG GATHERING




**Arctic Loon**




**American Wigeon**



**Aleutian Tern**



**Arctic Tern**




**Baird's Sandpiper**



**Bar-tailed Godwit**



**Barrow's Goldeneye**



**Black-bellied Plover**



**Black Brant Final**



**Black Guillemot**



**Black Oystercatcher**



**Black Scoter**



**Black-legged Kittiwake**



**Blue-winged Teal**



**Bonaparte's Gull**



**Bufflehead**



**Cackling Goose**



**Canada Goose**



**Canvasback**



**Cassin's Auklet**



**Common Eider**



**Common Goldeneye**



**Common Loon**



**Common Merganser**



**Common Murre**



**Common Ringed Plover**



**Common Snipe**



**Crested Auklet**



**Double-crested Cormorant**




**Dunlin**



**Emperor Goose**



**Eurasian Wigeon**




**Gadwall**



**Glaucous Gull**



**Glaucous-winged Gull**



**Great Horned Owl**



**Greater Scaup**



**Greater White-fronted Goose**



**Greater Yellowlegs**



**Green-winged Teal**



**Harlequin Duck**



**Herring Gull**



**Hooded Merganser**



**Horned Grebe**




**Horned Puffin**



**Ivory Gull**



**King Eider**



**Least Auklet**



**Least Sandpiper**



**Lesser Scaup**



**Lesser Yellowlegs**



**Long-billed Dowitcher**



**Long-tailed Duck**



**Long-tailed Jaeger**





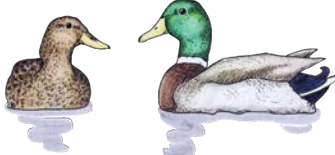
# MIGRATORY BIRD HARVESTING REGULATIONS PRINCE WILLIAM SOUND - WEST

SPRING  
SUMMER  
2022



www.crrcalaska.org

## SPECIES OPEN FOR HUNTING & EGG GATHERING



**Mallard**



**Mew Gulls**



**Northern Fulmar**



**Northern Pintail**



**Northern Shoveler**



**Pacific Loon**



**Parakeet Auklet**



**Parasitic Jaeger**



**Pelagic Cormorant**



**Pigeon Guillemot**




**Pomarine Jaeger**




**Red Phalarope**



**Red-breasted Merganser**



**Red-legged Kittiwake**




**Red-necked Grebe**



**Red-necked Phalarope**



**Red-throated Loon**



**Redhead**



**Rhinoceros Auklet**



**Ring-Necked Duck**



**Ruddy Turnstone**



**Sabine's Gull**



**Sandhill Crane**



**Semipalmated Sandpiper**



**Sharp-tailed Sandpiper**



**Slaty-backed Gull**



**Snow Goose**



**Snowy Owl**



**Spotted Sandpiper**



**Surf Scoter**



**Thick-billed Murre**




**Tundra Swan**



**Western Sandpiper**



**Whiskered Auklet**



**White-wing Scoter**



**Wilson's Snipe**

**\* THERE ARE NOT HARVEST LIMIT**

**\* THERE ARE NOT RESTRICTIONS ON EGG GATHERING**