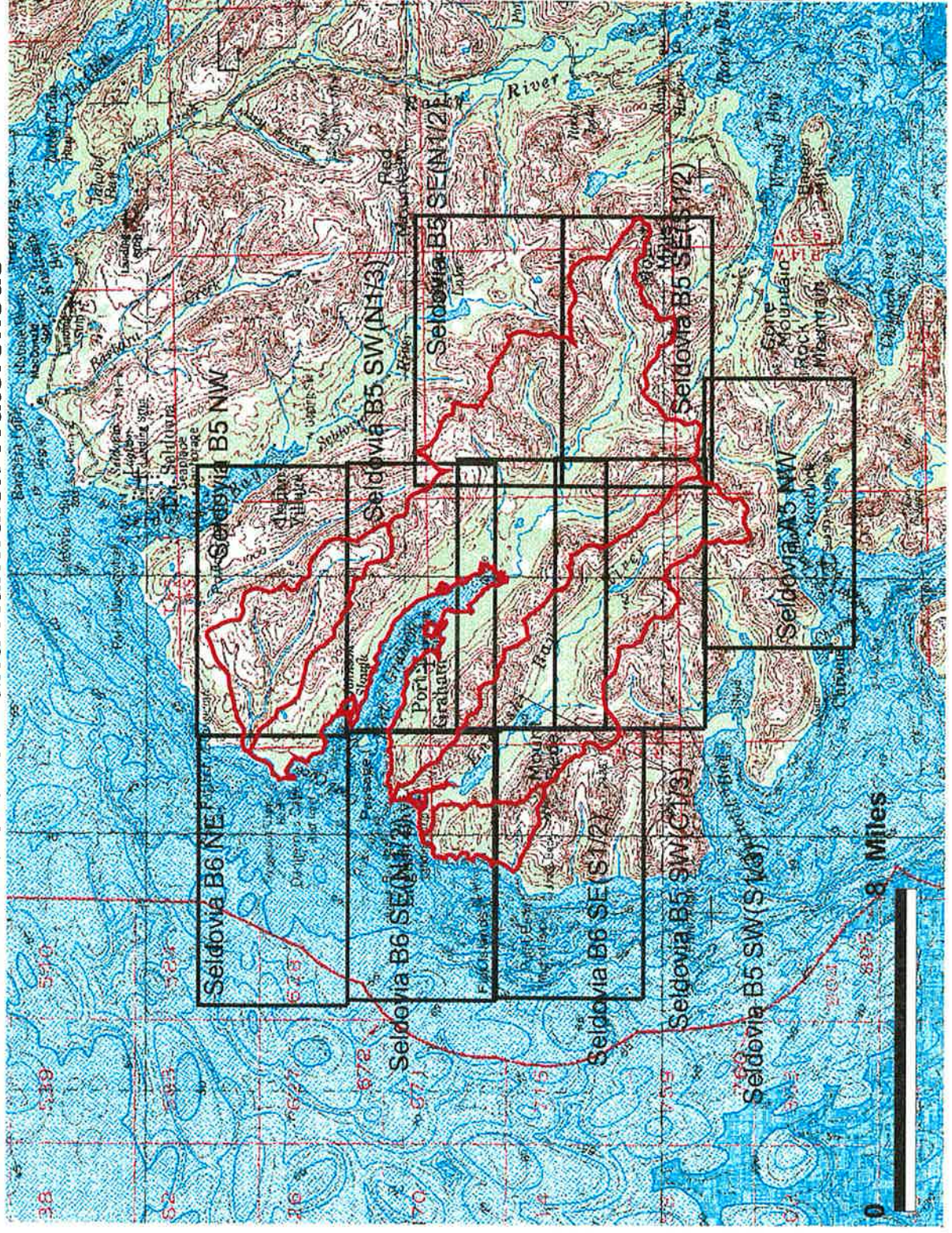


**Figure D-1**  
**Map Key Showing Subarea Boundaries**  
**Port Graham and Nanwalek Watersheds**



Large Watershed  
 Subarea Boundaries



# Subarea Map Seldovia B6 NE : Watershed Boundaries and Streams

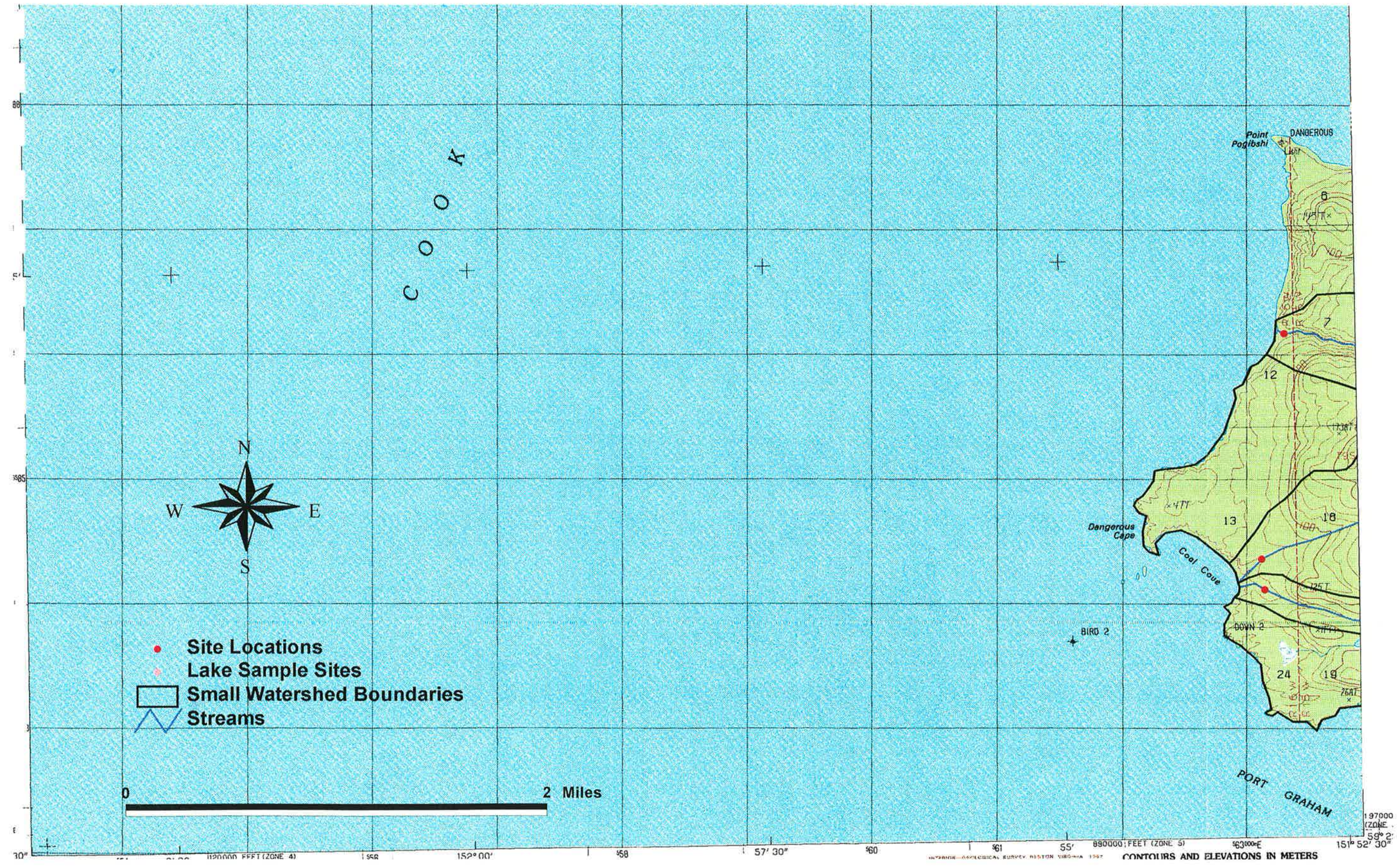


Figure D-2



# Subarea Map Seldovia B6 SE (N1/2): Watershed Boundaries and Streams

UNITED STATES  
DEPARTMENT OF THE INTERIOR  
GEOLOGICAL SURVEY

SELDOVIA (B-6) SE QUADRANGLE  
ALASKA-KENAI PENINSULA BOROUGH  
1:25 000-SCALE SERIES (TOPOGRAPHIC)

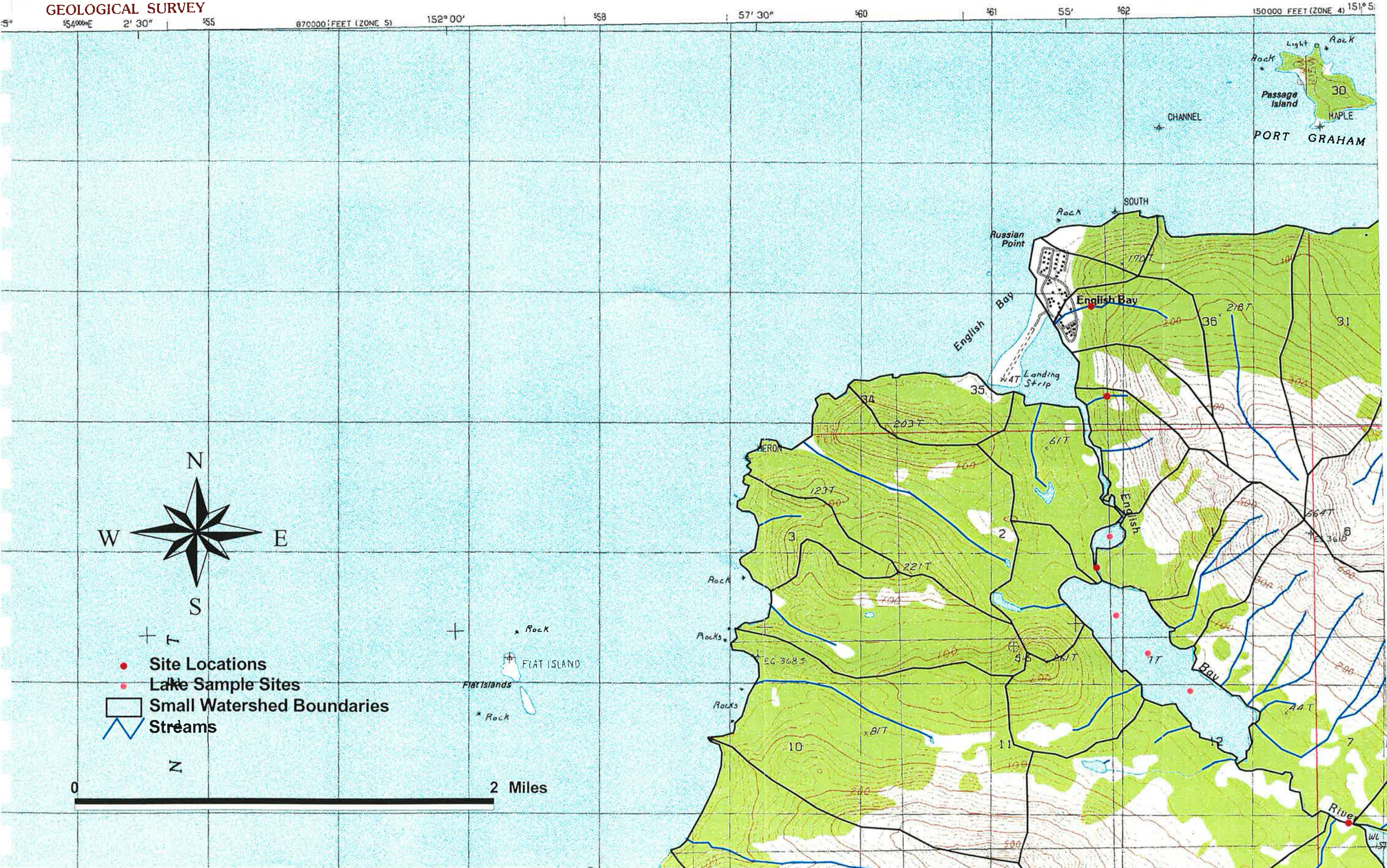


Figure D-3



# Subarea Map Seldovia B6 SE (S1/2): Watershed Boundaries and Streams

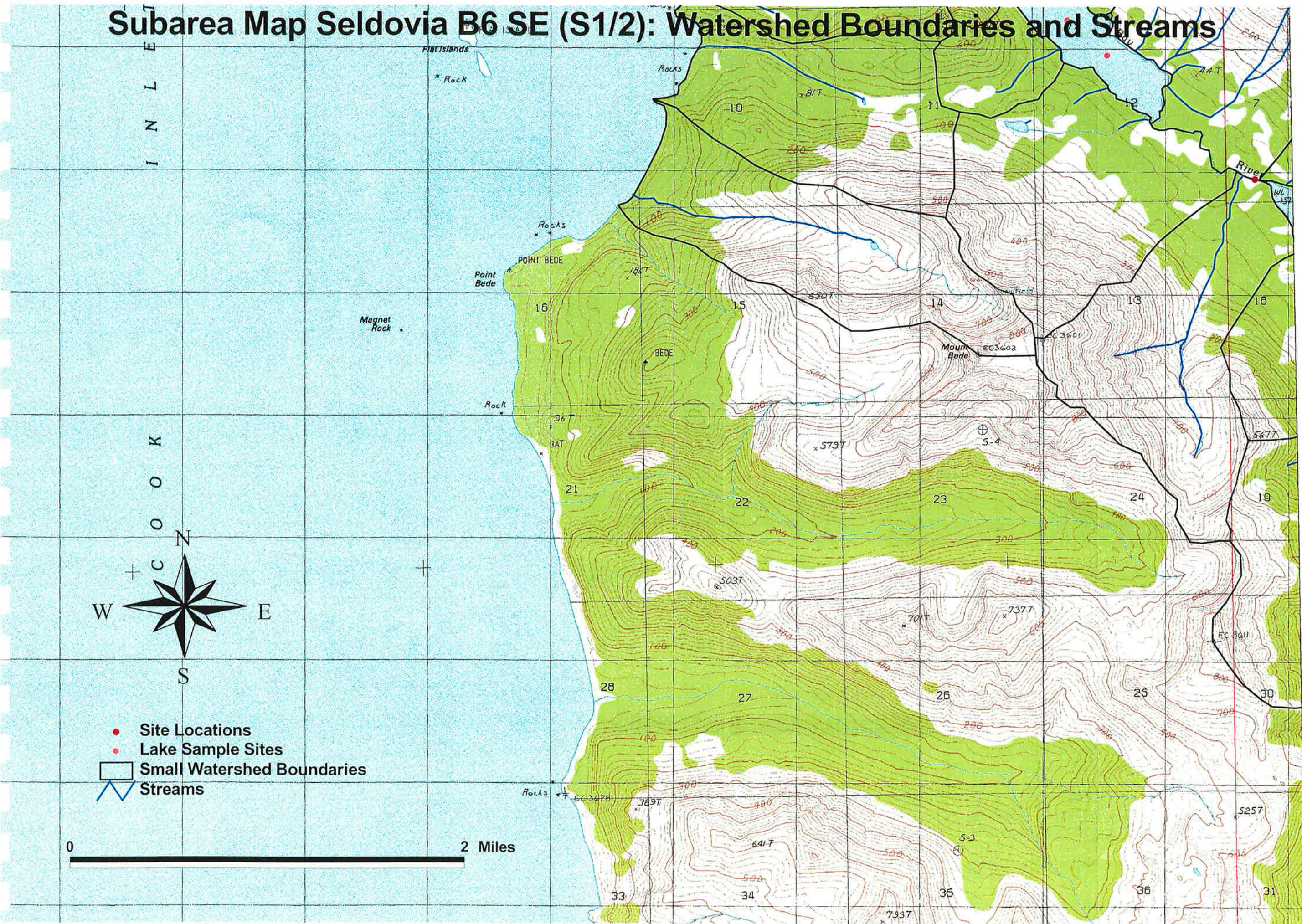


Figure D-4



# Subarea Map Seldovia B5 NW : Watershed Boundaries and Streams

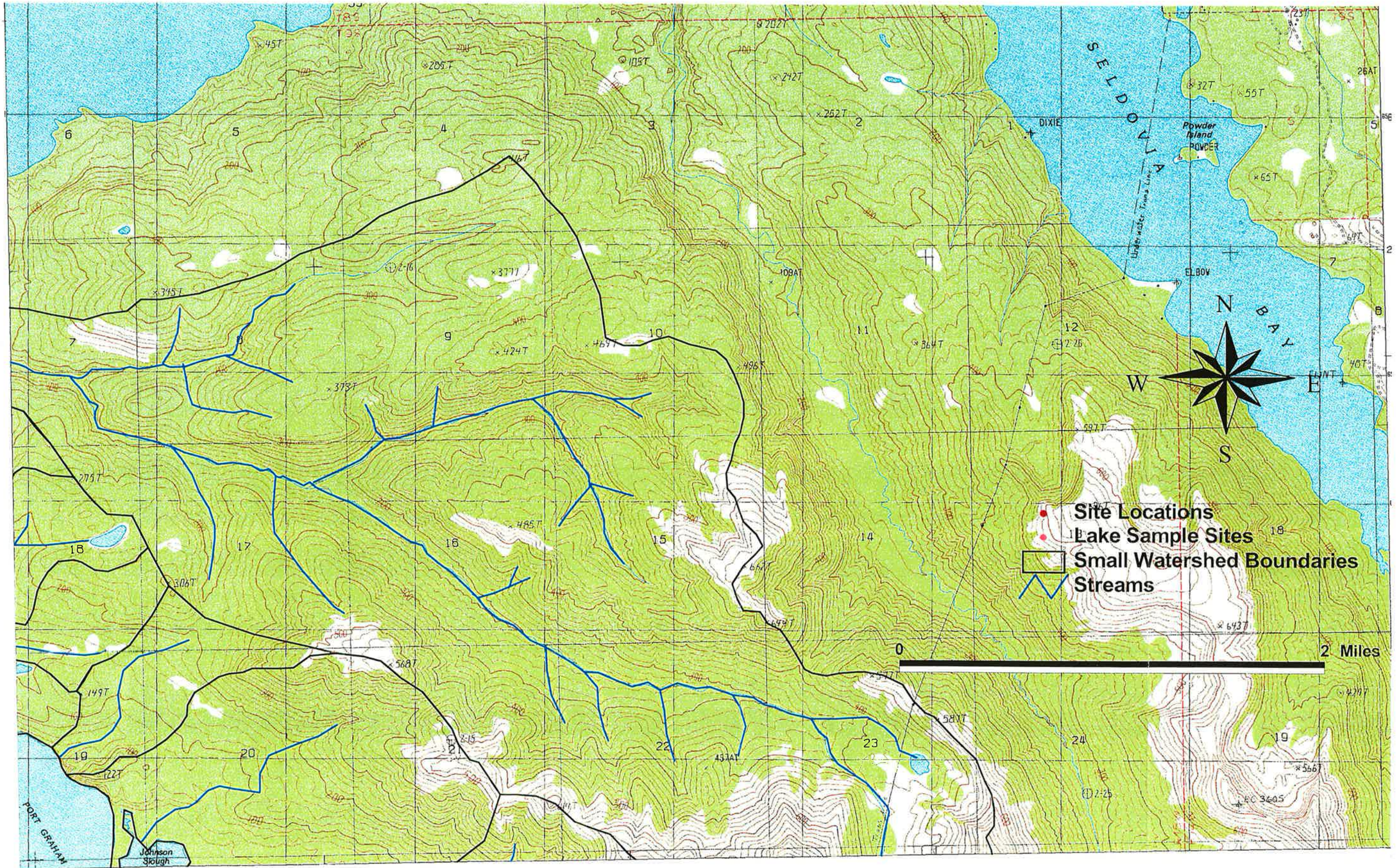


Figure D-5



# Subarea Map Seldovia B5 SW (N1/3) : Watershed Boundaries and Streams

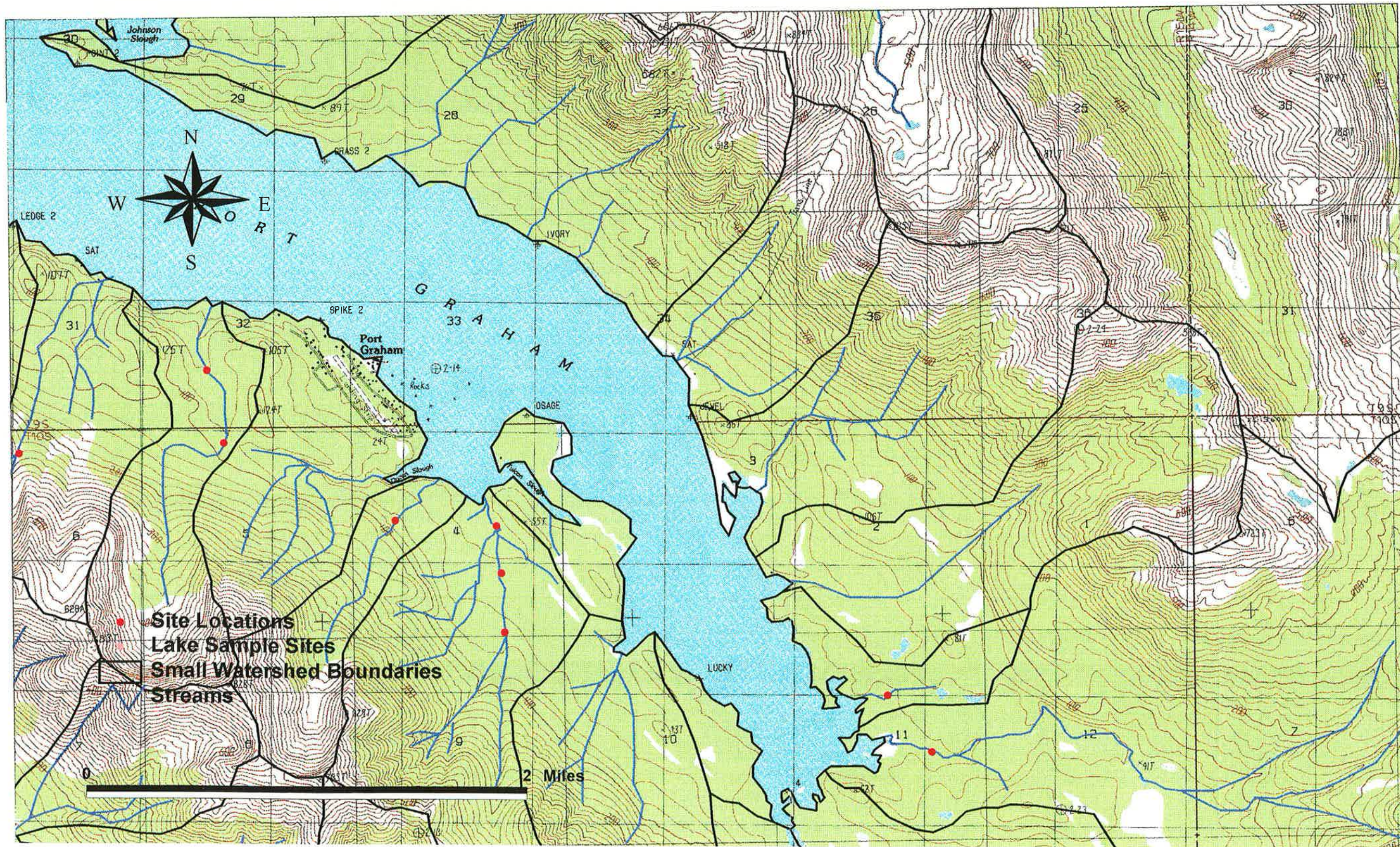


Figure D-6



# Subarea Map Seldovia B5 SW(C1/3) : Watershed Boundaries and Streams

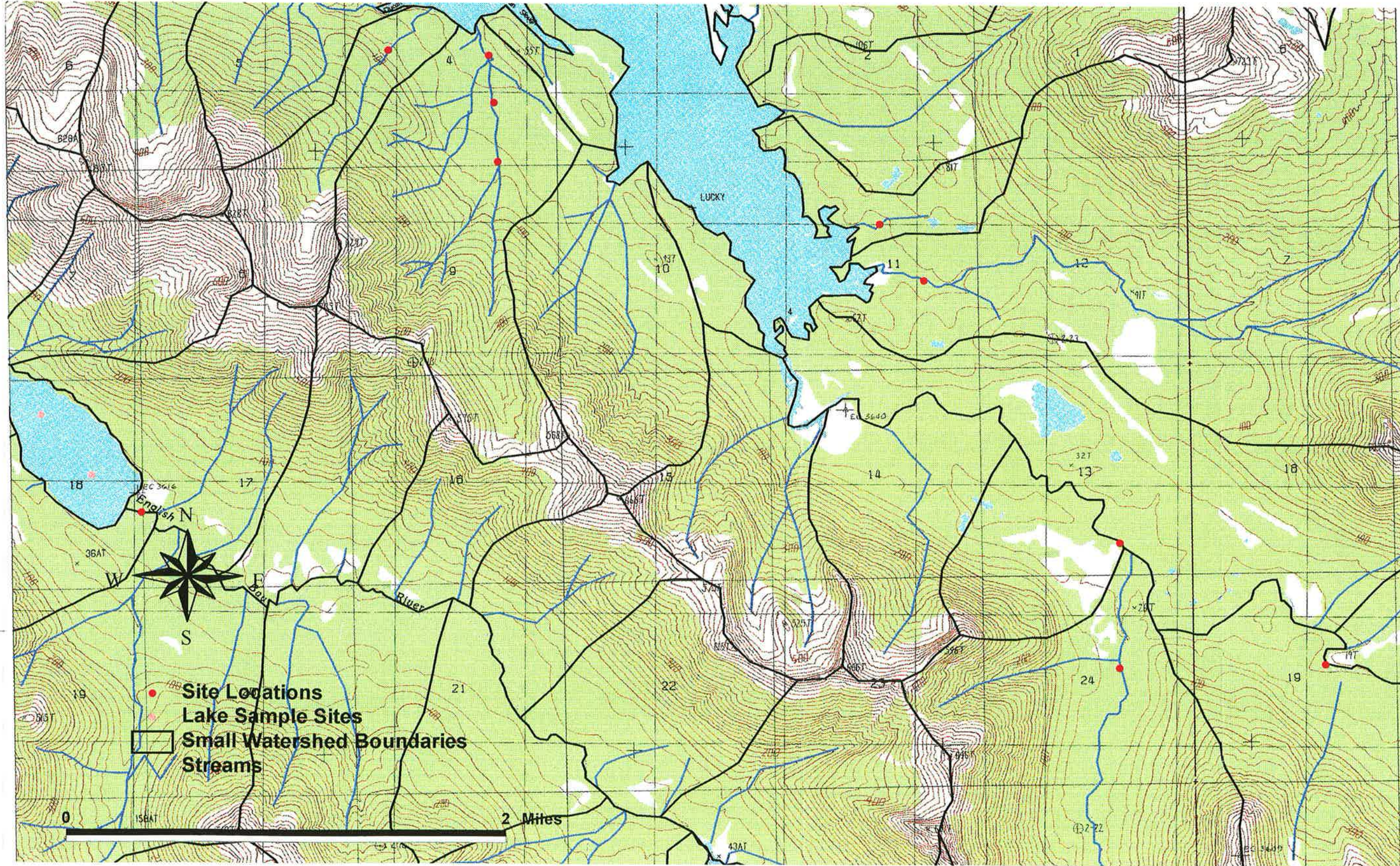


Figure D-7



# Subarea Map Seldovia B5 SW (S1/3) : Watershed Boundaries and Streams

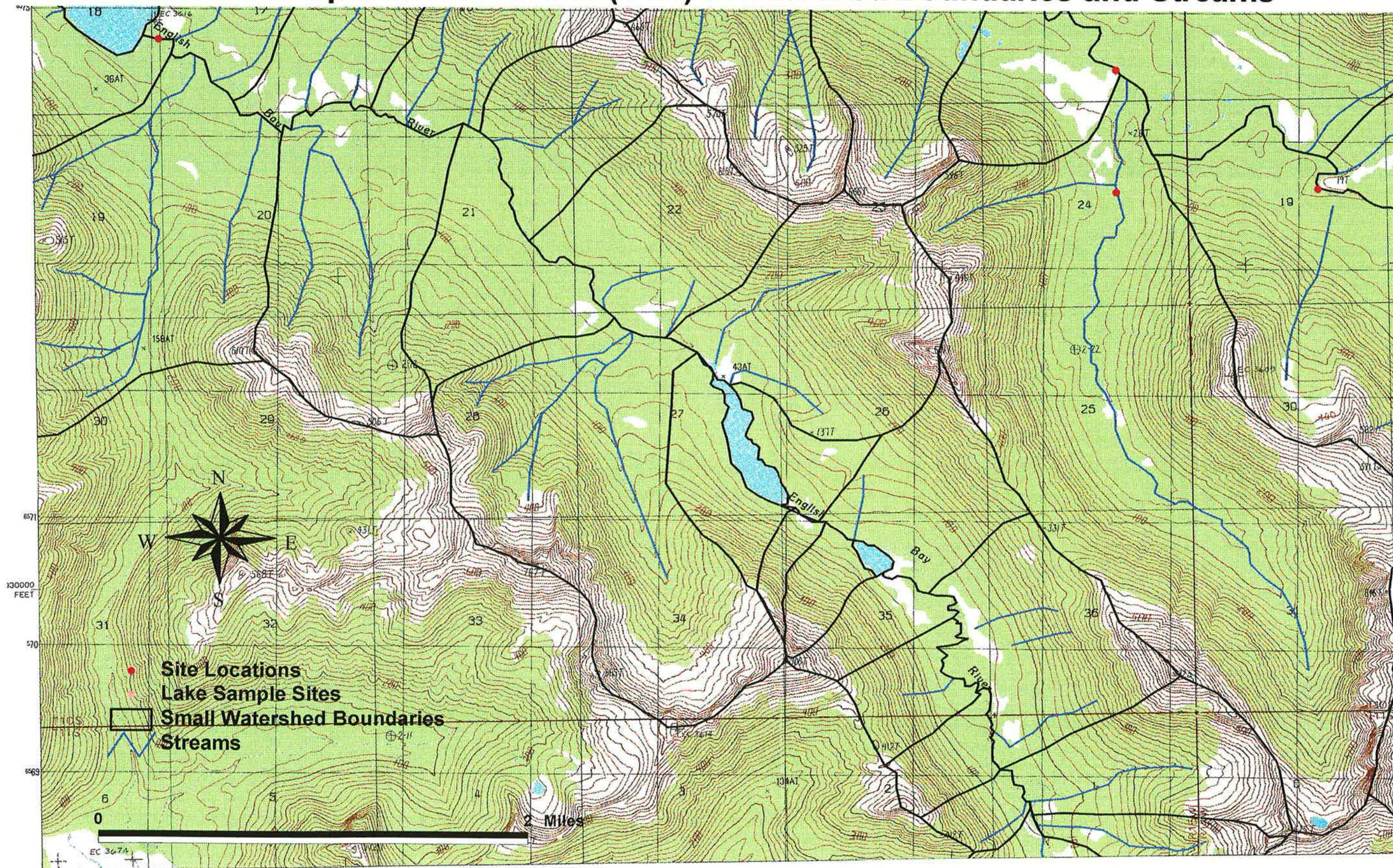


Figure D-8



# Subarea Map Seldovia A5 NW : Watershed Boundaries and Streams

INTERIOR  
EY

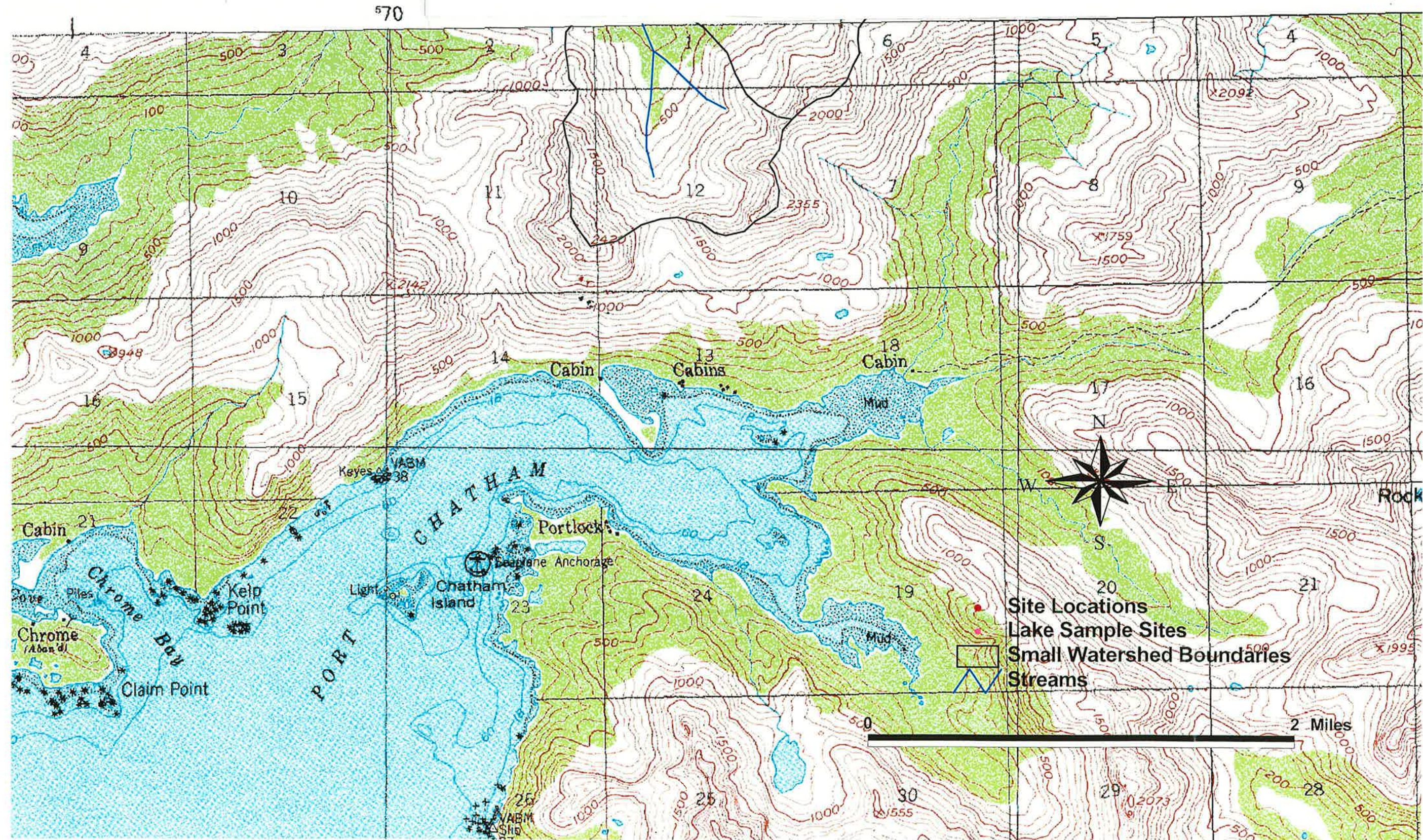


Figure D-9



# Subarea Map Seldovia B5 SE (N1/2): Watershed Boundaries and Streams

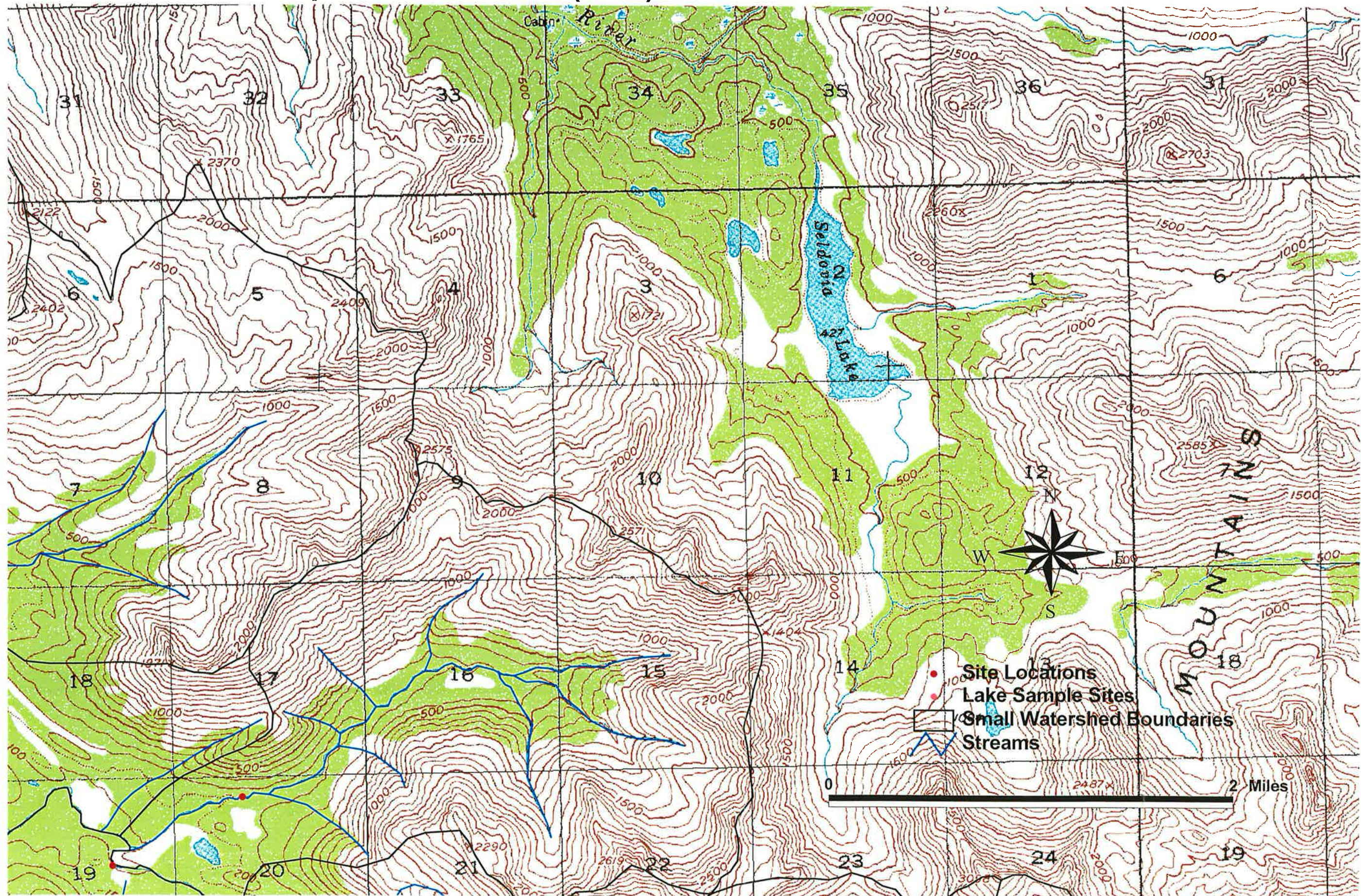


Figure D-10



# Subarea Map Seldovia B5 SE (S1/2): Watershed Boundaries and Streams

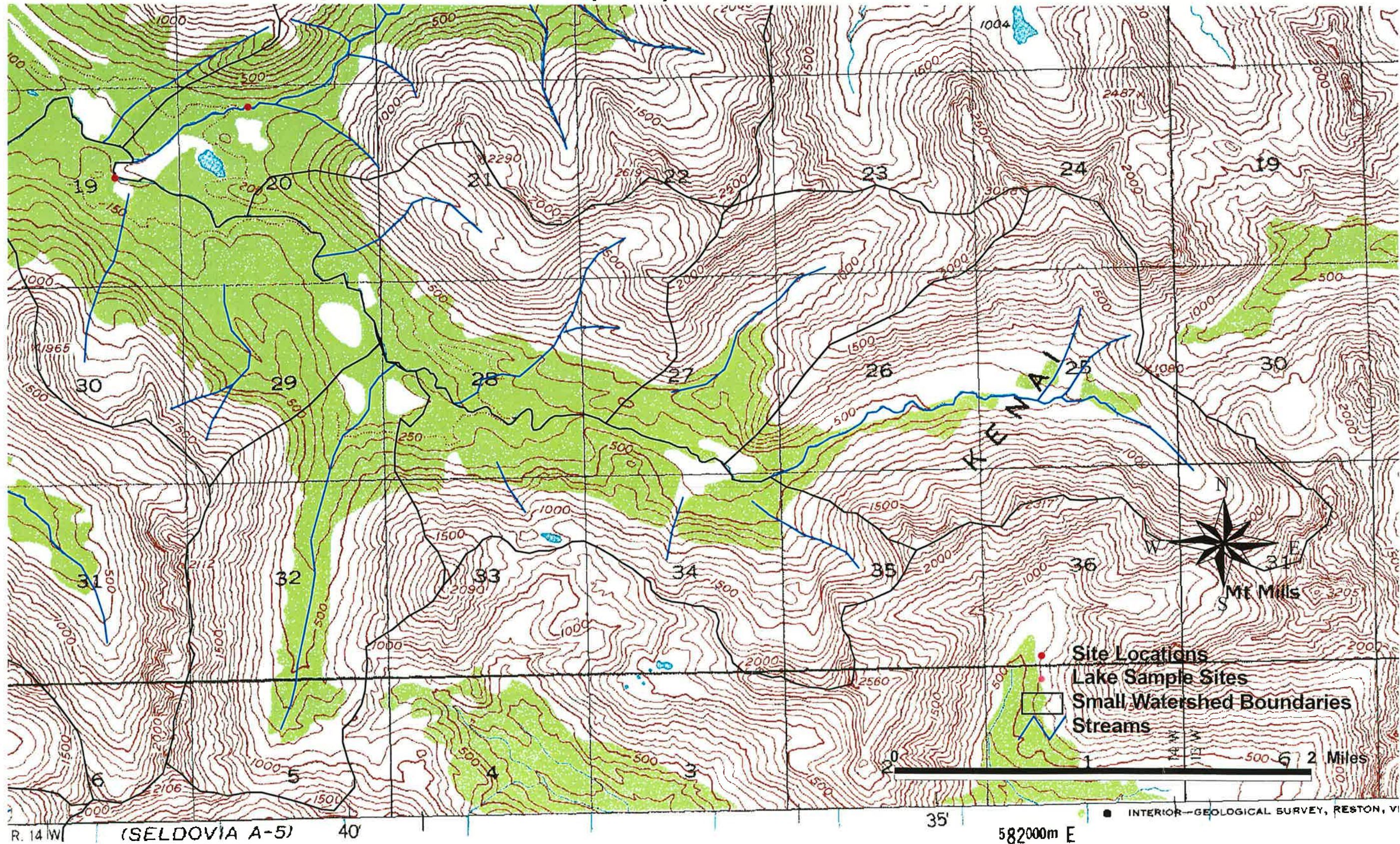


Figure D-11

SCALE 1:63360



ROAD CLASSIFICATION

Light-duty ..... Unimproved



**APPENDIX E**

**SOIL MAPS,**

**PORT GRAHAM AND NANWALEK WATERSHEDS**



## APPENDIX E

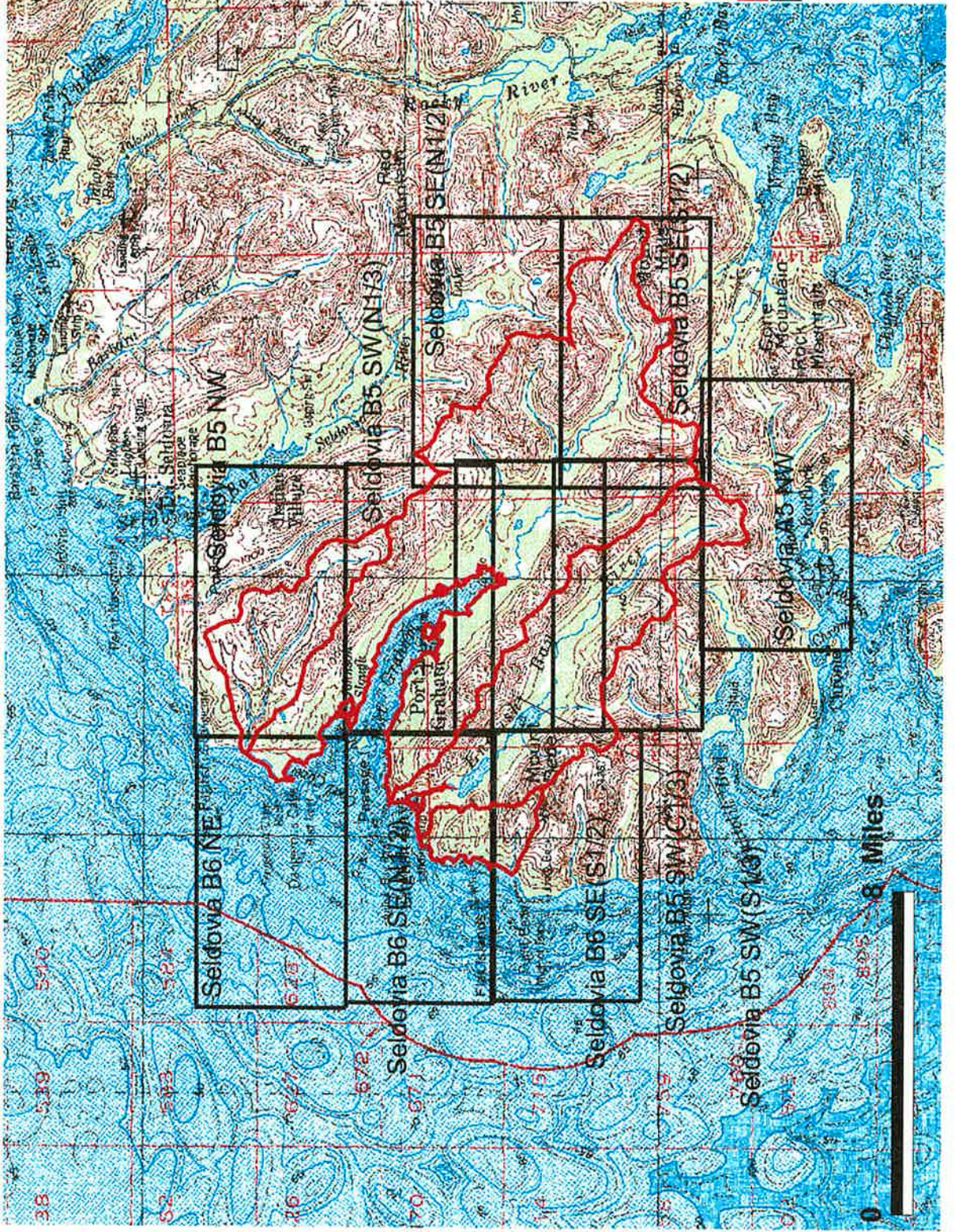
The following figures are included in this appendix:

- Figure E-1 Map Key Showing Subarea Boundaries, Port Graham and Nanwalek Watersheds
- Figure E-2 Key to Soil Map Units
- Figure E-3 Subarea Map Seldovia B-6 NE: Watershed Boundaries and Streams
- Figure E-4 Subarea Map Seldovia B-6 SE (N1/2): Watershed Boundaries and Streams
- Figure E-5 Subarea Map Seldovia B-6 SE (S1/2): Watershed Boundaries and Streams
- Figure E-6 Subarea Map Seldovia B-5 NW: Watershed Boundaries and Streams
- Figure E-7 Subarea Map Seldovia B-5 SW (N1/3): Watershed Boundaries and Streams
- Figure E-8 Subarea Map Seldovia B-5 SW (C1/3): Watershed Boundaries and Streams

Note: Soils have not been mapped by NRCS (1997) for the following subareas: Seldovia B-5 SW (S1/3), Seldovia A-5 NW, Seldovia B-5 SE (N1/2), and Seldovia B-5 SE (S1/2).



**Figure E-1**  
**Map Key Showing Subarea Boundaries**  
**Port Graham and Nanwalek Watersheds**





**KEY TO SOIL MAP UNITS**  
**Port Graham and Nanwalek Watersheds**

Field Symbol	NRCS Map No.	Soil Type
AFA	136	Taluwik Silt Loam, 0-3% slopes
AFB	137	Taluwik Silt Loam, 3-8% slopes
ChB	103	Chenega Silt Loam, 3-8% slopes
Cr	142	Typic Cryaquents-Andic Cryofluvents Complex, 0-3% slopes
KiB	124	Koyuktolik and Nuka Peats, 0-8% slopes
KpDD	112	Kasitsna Silt Loam, rolling to steep
KsE	117	Kasitsna-Seldovia Complex, 25-45% slopes
KsF	114	Kasitsna-KasitsnaCool-Seldovia Complex, 45-65% slopes
KtDD	122	Kasitsna-Tutka Complex, rolling to steep
KtEE	123	Kasitsna-Tutka Complex, hilly to very steep
KtF	120	Kasitsna-Tutka Complex, 45-65% slopes
KtG	121	Kasitsna-Tutka Complex, 65-120% slopes
KyDD	115	Kasitsna-Nuka Complex, nearly level to hilly
KytDD	116	Kasitsna-Nuka-Tutka Complex, nearly level to hilly
NaF	129	Nanwalek Silt Loam, 25-65% slopes
NaG	128	Nanwalek-Rock Outcrop Complex, 65-120% slopes
NKEF	126	Nanwalek-Kasitsna Cool Complex, 25-65% slopes
NwEF	125	Nanwalek Silt Loam, 25-65% slopes, warm
RM	104	Cryods, Cryothents, and Rock Outcrop, 5-120% slopes
RO	132	Rock Outcrop-Cryothents, very steep
SdC	134	Seldovia Silt Loam, 0-15% slopes
SdDD	118	Kasitsna-Seldovia-Portgraham Complex, rolling to steep
SdE	135	Seldovia Silt Loam, 25-45% slopes
SdEE	119	Kasitsna-Seldovia-Portgraham Complex, hilly to very steep
Ss	106	Ismailof Sandy Loam, 0-3% slopes
TxA	107	Jakalof Silt Loam, 0-3% slopes
TxB	108	Jakalof Silt Loam, 3-8% slopes

Source: NRCS (1997)

**FIGURE E-2**



# Subarea Map Seldovia B6 NE : Soil Types

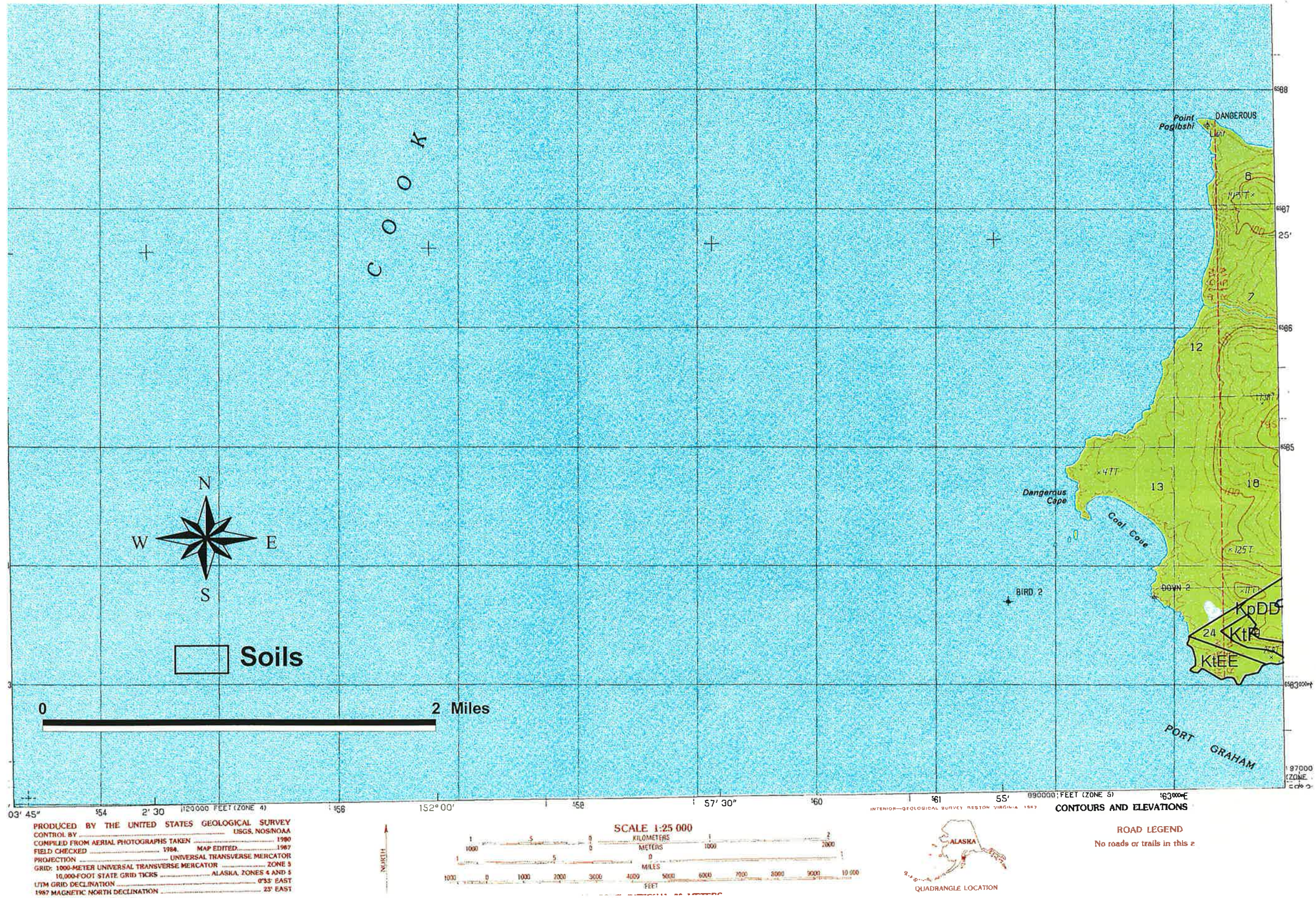


Figure E-3











# Subarea Map Seldovia B5 NW : Soil Types

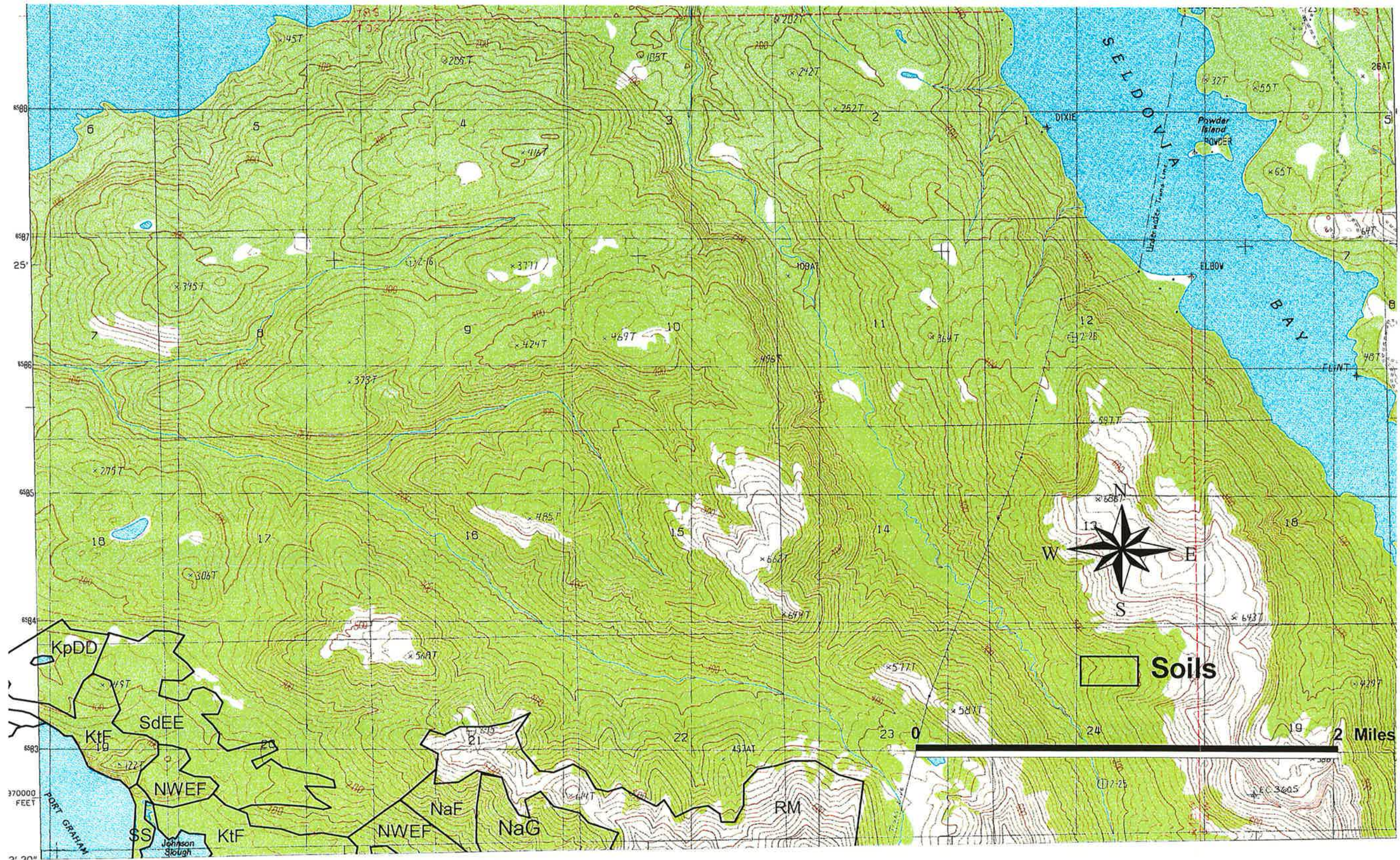


Figure E-6



# Subarea Map Seldovia B5 SW(N1/3) : Soil Types

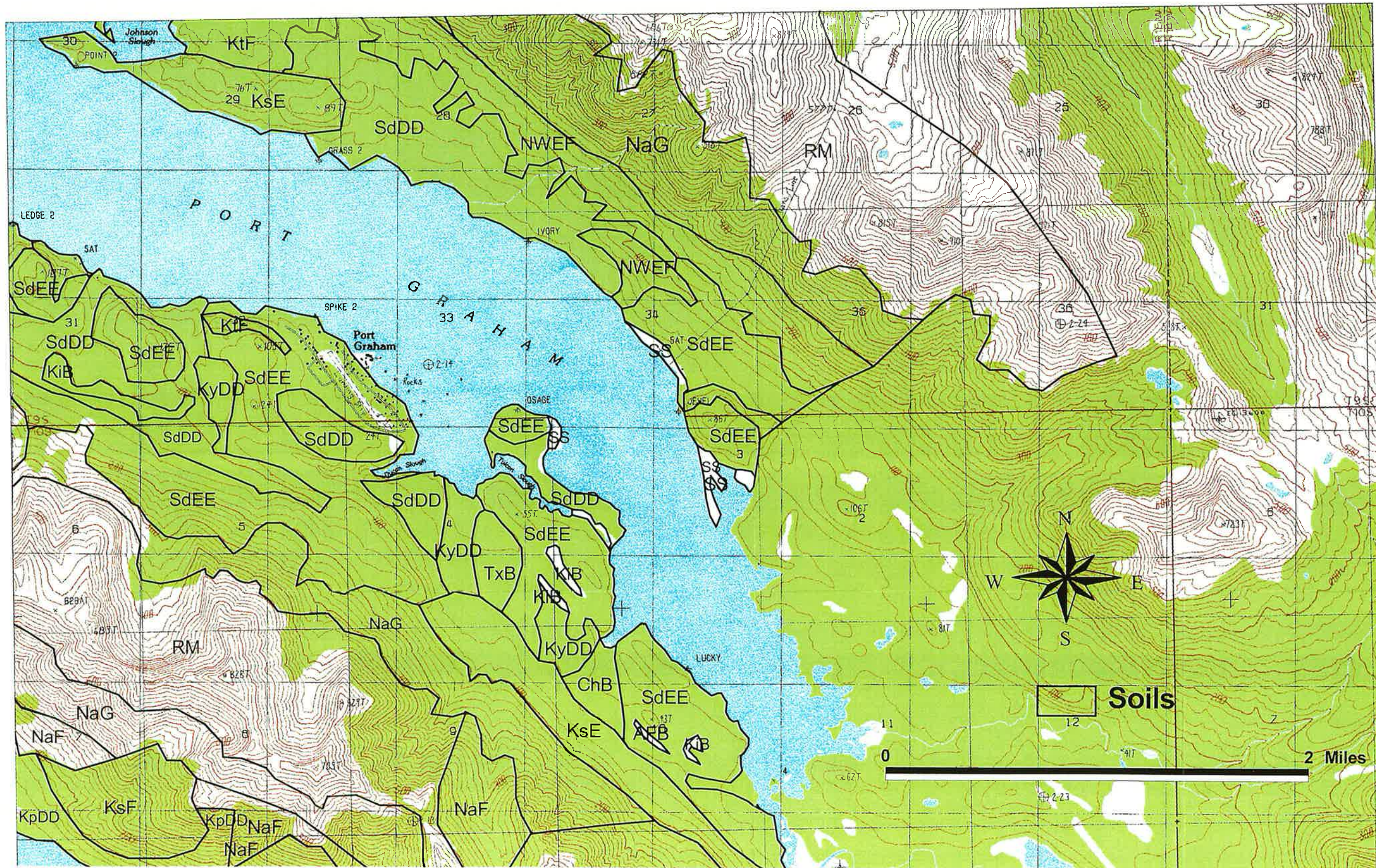


Figure E-7



# Subarea Map Seldovia B5 SW(C1/3) : Soil Types

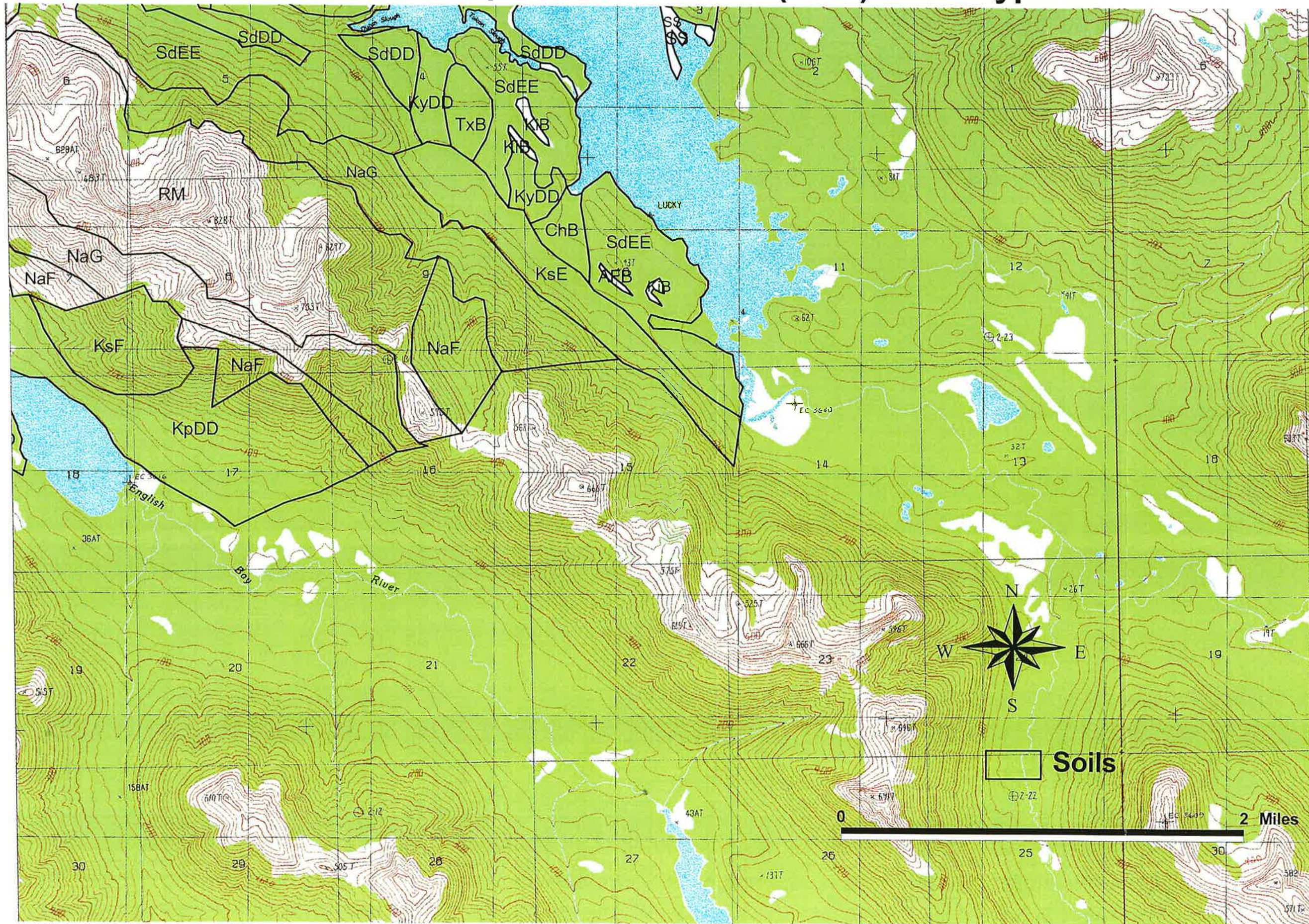


Figure E-8